



# DRIP POINTS

MAGAZINE FOR INSULATOR COLLECTORS

JUNE 2022 · Vol. 50, No. 3



**CELEBRATING 50 YEARS**



**THREADLESS INSULATORS WANTED FOR MY COLLECTION  
& RESEARCH. WILL PAY TOP DOLLAR!**

**COLLECTING INSULATORS SINCE 1967! I AM OLD.**

**DARIO DIMARE**

**318 MAIN STREET, NORTHBOROUGH, MA 01532  
617-306-2420 DARIO@DARIODESIGNS.COM**

# In This Issue *&* DRIP POINTS

## 🏠 NIA Board & Committee Articles 🏠

President .....	Darryl Wagner.....	5
Drip Points Managing Editor .....	Doug Rusher.....	6
Commemorative Coordinator .....	Margaret Wagner.....	7
Western Region VP .....	Roger Ziesak.....	6
Eastern Region VP .....	Gus Stafford.....	10-11
NIA Secretary 2021 General Meeting Minutes .....	Carolyn Berry.....	8-9

## 🏠 Features & Articles 🏠

The California Adventure (Part 3) .....	by Dwayne Anthony.....	12-18
Hunting a 1905 Powerline in South Wales.....	by Jack Nesbit.....	29-20
Most about Wade Insulators .....	by Michael Tucker & Dario DiMare..	21-31
Did You Know?.....	by Don Briel.....	32-33
Northwest Missouri Insulator & Bottle Show.....	by Bill Snell.....	34-37
Wheaton Show Report.....	by Rick Soller.....	38-39
Rohde Ranch Show report .....	by Roger Ziesak.....	40-41
Snippets on the CD 423 .....	by Alan Dawson.....	42-43
LSIC New Braunfels Tailgater .....	by Bob Machann.....	44
Tree Insulators (Part 3) .....	by Doug Rusher.....	45-48
Upcoming Shows & Events .....		50-51
Advertisements & Member Classified Ads .....		55-59

## 🏠 NIA Information & Forms 🏠

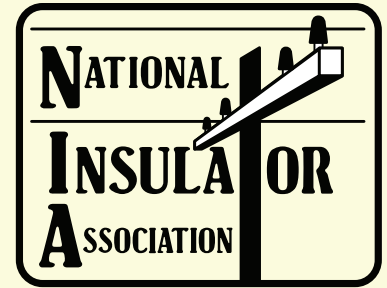
Drip Points Magazine Ad Rates and Specifications .....		58
NIA Donors & Sponsors.....		60-61
NIA Affiliated Clubs.....		62
NIA Membership Application & Renewal Form .....		63
NIA Merchandise .....		64-65
NIA Contact Information .....		66

## 🏠 About the Cover 🏠

### A Fascinating Variety of Wade Insulators

Invented by Jephtha Homer Wade in the 1850s, these unusual early telegraph insulators feature a machined wooden shell over an insulating glass sleeve beneath. The glass provided a high insulating value for the line, while the wood coating protected the glass from harm due to vandalism and other projectiles. Read all about the history of these fascinating pieces on pages 21-31!

Would you like to have your photo or artwork featured on the cover of Drip Points Magazine? Contact the Editors at [drippoints@nia.org](mailto:drippoints@nia.org).



Established in 1973, the National Insulator Association is a 501(c)(3) charitable nonprofit organization. Visit us on the web at [www.nia.org](http://www.nia.org).

## About Drip Points Magazine

Drip Points Magazine is published bi-monthly to all active members of the National Insulator Association.

To purchase ad space or submit content, please email [drippoints@nia.org](mailto:drippoints@nia.org), call (406) 461-7341, or write to: Doug Rusher, 3370 Chance Ct., Helena, MT 59602.

## Publishing Schedule

Issue	#	Deadline	Mailing
February	1	Jan. 10	Feb. 1
April	2	Mar. 10	Apr. 1
June	3	May 10	Jun. 1
August	4	Jul. 10	Aug. 1
October	5	Sep. 10	Oct. 1
December	6	Nov. 10	Dec. 1

## What's in a Name?

“Drip Points” is named after the feature seen on many insulators produced from the 1890s through the 1950s. Drip points are the bumpy protrusions around the base of an insulator. Their purpose was to help draw water off of the insulator.

Copyright © 2022 National Insulator Association. All rights reserved. No part of this publication may be reproduced, stored, transmitted, or disseminated in any form or by any means without prior written permission from the National Insulator Association. Magazine designed by Christian Willis.



# WANTED

My Goal is to form a complete  
collection of CD styles



**IF YOU ARE SELLING, PLEASE GIVE ME THE CHANCE  
TO TOP YOUR HIGHEST OFFER!**

The insulators I need are listed by their CD number in the following columns.  
Numbers in regular typeface are North American CD's Numbers in **Red** are Foreign CD's

North American		Foreign		Threadless		Odds & Ends	
10	136.5	334	404.2	570	656.8	700.4	1025
12	139.8	343	404.5	571.7	669.5	723.5	1034
25	148	343.5	405.5	583	669.8	724.5	1035
28	181.5	350.3	414	586.5	687.1	728.5	1040
28.5	192.1	365	445.4	591		732.4	1045
29.5	244.5	370.3	451.5	595		784	1052.5
30	245-cup	374	451.6	607			1066.5
30.5	303.5	377.7	480	607.5			1100
33	313	378.4	533	610.2			1102.3
45	313.1	379.3	537.4	613			1102.5
61		380.1	563.2	625.5			1103
109.7		404	567.5	653.5			1127



**THESE YUMMIES ARE LOOKING FOR MORE NEW FRIENDS**

**FOR CASH CONTACT:**

**Tommy Bolack 3901 Bloomfield Hwy. Farmington, NM 87401 (505) 325-7873**



# NIA PRESIDENT

DARRYL WAGNER ✨ NIA #8671

Members & Friends,

Not much to report this issue. Hope to see some of you at shows over the next few months and at Gettysburg. Believe there are still a few tables available, but there has been a lot of interest as there is much history and a lot of things to see in that region.

Speaking of the National, if there are any issues, suggestions, or changes that you might want the Board to discuss this year, please reach out to either myself or another Board member. As time goes on, things change, membership, technology, different costs, etc. We try to keep up with these changes but having input from our membership will help us keep up to date, along with membership being engaged and happy.

We are always looking for members that might be interested in giving a little of their time to assist with different aspects of the organization. If you find yourself with some extra time and would like to give back to the hobby, please contact me.

Darryl Wagner

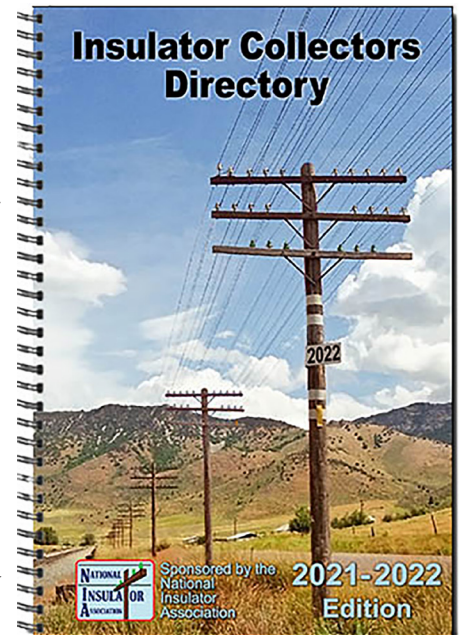


## 2023 Insulator Collectors Directory Update

It's nearly Insulator Collectors Directory season again! Last year, we changed the printed directory schedule to align with the NIA membership year. That means we will pull in any active NIA member who selected to be included as of September 1. The directory will then go to the printer in October and be mailed out by early November. We will send out reminder emails later this summer to confirm whether you've pre-ordered your copy or not. That should eliminate some of the confusion that happened last year.

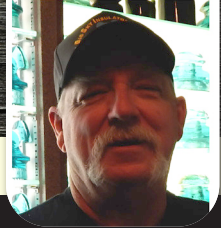
Be sure to visit the online directory at [insulatorcollectors.org](http://insulatorcollectors.org), where you can search for collectors and update your profile. If you want to add an additional note about what you collect or change your visibility preferences, that's the place to do it. Just sign in with the email you have on file with the NIA or you used when you registered.

Have you thought about advertising in the directory this year? This high quality, full-color publication is carried by collectors as a reference guide all year long, and seeing your ad will keep you in their mind. It's also a great way to support this hobby resource and help us keep the price affordable. Once again this year, we'll have a special deal for anyone who has year-long ads running in Drip Points. Contact me if you're interested in seeing your ad in the printed directory this year. Nathan Holmes - [directory@nia.org](mailto:directory@nia.org)



# DRIP POINTS MANAGING EDITOR

DOUG RUSHER \* NIA #1773



I hope everyone is getting back out to the Insulator shows and the National is just around the corner and it should be a GREAT one. I unfortunately won't be able to attend this year due to work, and I'm really going to miss seeing a lot of my good friends and seeing many of the historic sites that Gettysburg has to offer. I know Gus and his crew have been working really hard to put a fantastic show together. There have been quite a few shows already and the reports are that sales are strong and lots of great glass and porcelain have been finding new homes. I would like to remind the Show and Co-Hosts to please take a few moments to get photos and do a brief writeup and then send it in to us so we can share it with the rest of the hobby. We have to remember that some of the collectors can't get out to shows or are limited to the shows they can attend, and they really enjoy seeing your photos of the show and reading who was there and what pieces showed up and found new homes. So Please send them in to our new Show Report Coordinator.

## Announcing Our New Drip Points Show Report Coordinator Connie Dueker NIA#9654 Please e-mail your show reports to Connie at

[showreports@nia.org](mailto:showreports@nia.org)



# WESTERN REGION VP

ROGER ZIESAK \* NIA #8919



## Is it an Upgrade or "just" a Duplicate?

Whenever I go to a show, I'm always looking at everything. My collection is long past the point of me being able to remember what I have much less what the condition of individual pieces are, so I just let that go. I look for cool stuff that appeals to me or that really fits a hole in my collection. I'm always looking for interesting greens, especially yellow greens as they really pop for me. I have trouble identifying the various blues, but the greens work well for me. I have blues of this and that, but the greens are where I try to fill out the gaps in colors. I don't mind having duplicates as I can always spot a variation or two between individual pieces or just having two of the same cool color is OK too. I keep it simple and enjoyable. That's the beauty of this hobby. I can make it as complicated or as simple as I want.

Many of you have inventories and do a stellar job of focusing on what you need to fill out your color run or CD styles for a sub-collection. I think that's great, that level of dedication is impressive to me, and you have my applause. But, as for me, I just can't do it. The glass and mud are just too much fun to pass by even if I already have one. I look at everything and it never fails to put me in a good mood. That's the attraction of a show, Beth and I look forward to seeing everyone at the National at Gettysburg and look forward to seeing old friends and meeting new ones.





# COMMEMORATIVE COORDINATOR

MARGARET WAGNER ✨ NIA #8711

## NIA COMMEMORATIVES

NIA Commemoratives are made to commemorate our yearly National Shows and to support the organization. They make great gifts and are conversation starters if placed where people can see them.

Besides the 2021 "Clearly Gold", we have commemoratives back to 2015. Stock is low on a couple, so if you see something that you like, don't delay, order it. Here is our current line up .....

							
2015	2016	2017	2017	2018	2019	2020	2021
SOLID POUR	REGULAR POUR	CHAMELEON	ROCKY ROSE	REGULAR \$40	REGULAR POUR	REGULAR POUR	REGULAR \$50
\$45	<b>SOLD OUT</b>	REGULAR \$40	REGULAR \$30	SOLID \$50	\$40	\$40	SOLID \$75

If you are looking for oddities, we have some ghost embossing on the 2019's, some under pours on the 2021's and some "leaners" in several years.

plunged. They vary in size and can be crude. They may lean or have flaws and they have no base markings.

See [www.nia.org](http://www.nia.org) for some special pricing. You can also email [commemorative@nia.org](mailto:commemorative@nia.org) if you have some specific questions.

Thank you for your support of the NIA Commemorative Series and the NIA. ▲

*Margaret Wagner*

Several of the above commemoratives are almost out of stock, so orders are dependent upon availability. Note: Solid pours are not

### History of the National Show Commemoratives: "Collecting Our History"

Being an enthusiastic insulator collector, Frank Miller of Tulsa, Oklahoma went home from the First National Insulator Meet (that's what the "National" show was referred to as in 1970) held in New Castle, Indiana with an idea that collectors should have something by which they could remember the National meets. After months of struggling, he managed to have an insulator mold made. Frank said it was often referred to as "Frank's Last Folly" since he retired from teaching shortly thereafter. He also said it was worth the struggle. The commemorative insulator he designed replicated the early threadless "Pilgrim Hat" (CD 736) and is almost 4 inches high and is 3¼ inches across at the base. Since 1970, the glass commemorative has marked the National show event with new embossing for the location and a new color of glass. In 1979, the project continued on by John & Carol McDougald of Sedona, AZ. John and Carol produced the yearly commemoratives through 2009, at which time they donated the production to the National Insulator Association starting with the 2010 commemorative. Any profits made from the NIA Commemoratives go directly to benefit the National Insulator Association, a 501(c)(3).

To place your order online, please visit:  
<https://www.nia.org/products/commemorative/>  
We accept PayPal and major credit cards.

Alternately, you can send your order and payment to:  
**Margaret Wagner**  
14615 Skyview Ave.  
Smithville, MO 64089  
(816) 719-0801  
[commemorative@nia.org](mailto:commemorative@nia.org)

Please make checks payable to "NIA".  
If you have additional questions or live outside the continental United States, please contact me by phone or email prior to your order. Thanks!



# NIA SECRETARY



CAROLYN BERRY ✨ NIA #4336

Hello NIA Members ... I am putting a plug in for this upcoming National in Gettysburg, PA. Don't delay in getting your reservations in for tables, hotel nights, banquet and excursions etc. Please look at last year's general membership meeting minutes from New Mexico, as they will need to be approved at the July annual NIA membership meeting. If you see something that you have a question on, please contact me. I am looking forward to seeing the NE / Pennsylvania area.... so much to see and do there! Have safe travels to local and distant shows to enjoy all the great aspects of collecting.

Carolyn Berry  
NIA #4336  
NIA Secretary 2020-2022  
2017 NIA Lifetime Member

**52nd Annual NIA General Membership Meeting July 2, 2021**  
**McGee Park Convention Center Farmington, NM**  
**Scheduled Meeting: 4:30 pm (MST)**  
**Meeting called to order at 4:15 pm (MST) by Darryl Wagner, President**

### Opening Remarks by our President, Darryl Wagner

Thanks to Tommy Bolack for hosting this great show here in Farmington, NM. Show has been advertising on Tommy's radio show for weeks, so we expect a great number of walk-ins tomorrow when we open the doors to the public.

### Reports of our Board of Directors and Committees will follow:

#### Secretary: Carolyn Berry

Due to not having our yearly membership meeting in 2020 to approve our 2019 NIA General meeting minutes, please refer back to Drip Points – April 2020, volume 48, no.2, pg. 14 & 15 to read the minutes as reported / printed by Walter Baumgardt, Secretary. (Several copies of this report have been distributed in this meeting to review)

No questions were asked of the minutes for 2019, so a motion was made by Graham Barnes and seconded by Nathan Holmes to approve the 2019 NIA General Meeting minutes as published.

Carolyn stated that all of the paperwork and fees related to our Non-Profit Education 501c3 status in AZ were in place and the financial records /corporate tax returns were filed timely and also on file.

General Meeting minutes were unanimously approved by the membership

#### 1st Past President: Steve Roberts

Thanked the membership for their support while he was the NIA President through 2020.

#### Treasurer: Bill Rohde

Came through Covid-19 year well. Overall NIA in great shape as a corporation. Board of Directors passed a balanced 2021 revised/amended budget and approved a 2022 budget.

Donations are coming in strong – thanks to Tommy for his donation for 2 additional DP's  
Raffle sales at this show are going well, with additional items added today to benefit the NIA.

#### Membership: Darryl Wagner (report given in absence of the membership director, Andrew Gibson)

We currently have 1000 primary members; family membership – membership is staying steady  
Up tick in new members over the last couple of month

#### Information Director: Christian Willis

Drip Points Editor – thanks Tommy's donation to allow us to do 6 issues a year  
Thanks to Mike Green and Doug Rusher as assistant editors

#### Western VP: Roger Ziesak

4 shows have been held in our region, all well attended / lots of walk-ins  
Many shows upcoming in the Western Region.

Lost our Logan, UT National show due to Covid-19 in 2020

New VP as of election in 2021





# 2021 GENERAL MEETING MINUTES

CAROLYN BERRY \* NIA #4336



## Central VP: Chris Hedges

New shows rescheduled for this fall that were canceled last spring.  
Newly elected Central VP in 2021; position was filled in 2020 by Chris when Darryl became President

## Eastern VP: Gus Stafford

The clubs in the Eastern region that have a lot of participation and their shows have been good  
Eastern region will hold the National next year in Gettysburg, PA on July 28-30, 2022. Please see me at the National Show Host table to get information or sign up for your table(s), banquet, excursions etc – the NIA website is now active with show information.

Business card with all National Show information available at my table

We are looking for raffle donations to offset costs of the National next year

Looking for a Confederate Egg to be donated to the NIA for a display being made & donated to the Civil War Museum in Gettysburg.

## Directory: Nathan Holmes

Brand new committee formed in June 2020

Thanks to our President, Darryl Wagner, Bill Meier and Andrew Gibson for all their help in putting this new directory together.

Selling those 2021 Directories leftover here at the show on the NIA Products table – only 6 left!

Insulators.org to update your information for the directory

Pre-order the 2022 Directory by 9/1/21 cut-off date – will be sent to members on November 1st.

Price is \$7 for NIA Members, and \$10 for Non-NIA members.

Advertising is gratefully accepted – always want advertising!

MUST MARK YES on your membership form that you wish to be included in the “Online Directory” or you will be considered “NO”/ not wanting to be listed.

We want an all-inclusive directory for the hobby.

## Product Marketing / Commemoratives: Margaret Wagner

Sold out of 2021 solid commemoratives – we still have regulars available

We are special ordering another dozen solids, for \$75 ppd.

## Webmaster / Technology: Bob Berry

New technology committee was formed last June 2020

Gallery for “insulators not made of glass or porcelain” has been added

Always looking for pictures of insulators not on the website

Dave Baron has developed software for the new NIA Companion app. This tool will be a wonderfully threaded forum for insulator collectors. See Dave Baron’s table where he will take you through it all.

Elton Gish donated insulator catalogs to the NIA and is on the NIA.org website / it is password protected – contact me if you would like to view

Adding new content and more technology all the time.

## Presidents Remarks

Promotions is a revised committee with 3 VP’s and regional members

Development Committee is now chaired by Bill Rohde – we now have “interest card” / information postcards for members who wish to include in boxes being shipped to promote the NIA and the hobby to the public at large.

Banquet tickets inside your packet and needs to be placed on your dinner table

Devotional will be at the hotel in the morning.

Meeting was held slightly early due to meeting inside the show hall, if anyone missed the beginning of the meeting, please let me know and I will fill you in.

Need show hosts for 2024 for the Central Region National – letter of intent needs to be in by November 2021. Gene Hawkins is our Events Chair.

Tommy Bolack has been very gracious to the NIA and this National.

2023 National – June 9-11, 2023 in Logan, UT

Show Hosts – Don & Jeanne Briel / Arnold & Linda Smith

2020 National in Logan, UT was canceled due to Covid-19 – nearly everyone who signed up to attend that National donated their reservations to the NIA to cover cancellation costs.

The host hotel will meet or improve on costs for rooms, room rentals etc. that were promised in 2020.

Motion by John Weber & seconded by Colin Jung to adjourn the meeting.

Meeting ended @ 5pm & unanimously approved by the membership Respectfully



# EASTERN REGION VP

GUS STAFFORD \* NIA #8871



The State of Pennsylvania has had a unique relationship with insulators from early manufacture through hosting multiple National Insulator Association Conventions and Sales. We continue this relationship next month with the 53rd NIA National Convention and Sale in Gettysburg, PA this from Friday, 29 July, through Sunday the 31st.

The usual suspects: Brookfield, Hemingray, Whitall Tatum, Locke, Ohio Brass, and Lapp can all be found in the state. But unlike many locations, the variety of unique manufacturers and embossings make things interesting. Harlow, Beaver Falls, and Pittsburg add to available manufacturers, while Duquesne, Westinghouse, LAC, P&W, and W.U.P. can be found on the skirts and domes of some Pennsylvania Insulators.



The historic core industries of Pennsylvania – Steel Mills, Railroads, and Mining all required large quantities of insulators.

Pennsylvania's first National was in 1974. Steve and Donna Bobb hosted the 5th National in Hershey, PA. It is believed that this is when the first CD131.8 Paisley appeared in the hobby. There are very few of these known in the hobby today, with the last one surfacing at a Mechanicsburg, PA swap meet a few years ago. Ross Baird's amazing display from the 2017 National highlights these jewels on the top row (with another unique Pennsylvanian, the CD 141.9 Emminger's).





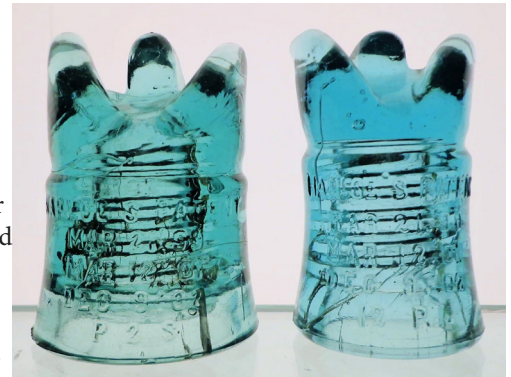
# EASTERN REGION VP



(CONTINUED)



In 1989, Dave Wiecek, Frank Edgar, and Doug Williams hosted the 20th National in Allentown, PA. Many in the Eastern Region recall this as one of the best Nationals, ever. The National featured the appearance of the large discovery of CD 265 Fisher insulators from Detroit. Many found new homes!



The last National held in Pennsylvania was the 35th in 2004. The Western Reserve Insulator Club sponsored the show in New Kensington, PA. The National was the coming out party for 12 CD141.7 Twigg insulators found by Andy Wadysz. Prior to this cache, there was only one CD141.7 known (Dick Bowman's) – and it was largely assumed that it might have been the patent model.



So now it's on to the 4th Pennsylvania National in Gettysburg, PA. As of this writing, we are already at 95 tables and 15 displays (with over two months to go)! We have attendees coming in from around the country. Why don't you join us on the weekend of 29-31 July 2022? Who knows what one-of-a-kind insulator might show up, or who may arrive with a previously unknown cache of goodies!

For more information, visit [https://www.nia.org/shows/2022\\_national/](https://www.nia.org/shows/2022_national/)

If you still need to reserve a room, contact: Greta Bowring, Sales & Catering Coordinator, Phone: 717-339-0020 ext 6011. See you there! 🍷

*Acknowledgement: The photographs contained in this article are from the NIA Web Site, ICON, or public internet sources*

# THE CALIFORNIA ADVENTURE (PART 3)

BY DWAYNE ANTHONY ✱ NIA #3619

*This is the third in a series of articles documenting the May 2019 excavation of the California Glass Insulator Company factory site in Long Beach, California, circa 1912-1914. The involvement with this excavation has subsequently generated a deep desire to delve into further historical research on CGI Co. This report is intended to provide an accounting of the dig at the factory site only. Extensive historical research is being compiled for a future book publication. Please note that all references to 'CGI Co' (California Glass Insulator Company) are used loosely to cover the factory's full production period, including their latter reorganization to California Glass Works.*

## DAY THREE OF THE DIG

Saturday, May 11, 2019. The weather forecast for the day was partly cloudy, with an expected high of 71 degrees F. We arrived at the site at 8:30 a.m., ready for another full day of new hopes and dreams. Since it was Saturday, the site and surrounding commercial properties were quiet, with no work crews and no tractor-trailer rigs coming and going on the adjacent streets. Having already discussed our game plan over breakfast, Dave and I promptly locked ourselves inside the property, then grabbed the tools needed for the start of our day.

The yellow glass layer continued to summon our attention, especially after we concluded the previous day's dig with the extraction of a complete yellow baby signal. However, we needed to revisit some other areas for at least an hour or two, with the chief objective of gathering more blue samples and other related artifacts for research purposes. Dave elected to focus his attention on the various piles left for us by the excavator. We only lightly explored them during the previous two days, so they required further investigation.

My first self-imposed assignment was to grab a bucket and start gathering up samples from the suspected cullet piles. (Figure 20) For those that may be unaware, "cullet", or used glass, is commonly utilized in glass-making to reduce the cost of raw materials, and to lower the overall melting temperature of the glass batch. This results in lower production costs for both materials and energy. Other factors can be involved with modern-day glassmaking, but these were the two basic incentives for using cullet in early glassmaking.

My initial targeted area for the cullet harvesting was an intriguing cut made by the excavator the previous day. This was an interesting layer holding a 50/50 mix of window glass and soda bottles. I also picked from a nearby pile that yielded numerous types of bottles that were randomly strewn about from one of the many other excavator bucket dumps (Figure 21). I soon filled my plastic five-gallon bucket with varying samples of aqua, green, and amber soda and mineral water bottles. Most were entirely filled with dirt and their exteriors were



FIGURE 20 (ABOVE) - YELLOW CD 1131 EGG WITH CALIFORNIA PAT APL'D FOR EMBOSSEING

FIGURE 21 (BELOW) - CULLET CONTAINING MISC. SODA BOTTLES, CARBOYS, AND WINDOW GLASS.



# THE CALIFORNIA ADVENTURE (PART 3)

(CONTINUED)



FIGURE 22 - VARIOUS BOTTLES AND BOTTLE SHARDS FROM THE CULLET LAYER.

crusted over with the hardened silt. I had to vigorously wipe many of them down with my gloved hand to determine the color and search for any possible embossing. The goal was to gather as many different samples as possible, regardless of condition. Most of the bottles were damaged or reduced to shards, providing more evidence that the materials found in this specific zone were probably castoffs from local bottling companies that had been sold to CGI Co as cullet (Figure 22).

About ninety percent of the soda bottles found were tooled crown tops in lighter shades of aqua, blue aqua, and green aqua. The majority were embossed with *Los Angeles Ice and Cold Storage Los Angeles Cal* around the lower sides, and *Puritas* on the bottom. There were so many of this type that we could have gathered hundreds of specimens, from complete bottles to small shards.

With only a few exceptions, most of the additional bottles gathered from this zone were partial top and bottom pieces. This group con-

sisted of green and amber tooled crown top soda and mineral water bottles; small green turn-mold wine bottles with tooled blob-like tops; round bottom aqua soda bottles with cork-type applied tops; clear cork-type whiskey necks and tops, both tooled and machine-made; clear footed siphon (seltzer) bottles; tops and bases of larger aqua, green and amber mineral water bottles, possibly up to one gallon in size; clear milk bottles; and finally, tops and bases from very large water bottles (carboys), possibly up to 5 gallons in size, in shades of ice green, aqua, and blue.

After cleaning and studying these specific samples, it has been determined with full certainty that everything found in this particular zone was acquired by CGI Co to use as cullet. The first strong clue was the age of the bottles. Every single one of these bottles, with the exception of one lone machine-made whiskey top, exhibited hand-tooled or hand-applied tops. This indicates they were manufactured by a molding and lip finishing method that was employed well before CGI Co went into glass production in 1912. Other continuing research has provided solid proof that none of these glass bottles were manufactured by CGI Co. This would apply to the window glass trimmings and shards that were acquired for use as cullet, as well.

What about the yellow crown top soda bottles and shards found the day prior in the yellow layer with the insulators? Were they, too, the result of cullet acquisitions? Or were they made by CGI Co? Yes, they were found in the same proximity as the yellow insulators, but is that strong enough evidence that they were actually manufactured by CGI Co? Further exciting revelations will be provided in *Part Four* of this series, so stay tuned!

After transferring three bucket-loads of bottle samples into two cardboard boxes, I grabbed one of the empty buckets and a shovel and wandered over to a pile of practically pure window glass cullet. I kept listening to that reappearing voice in my head encouraging me to collect samples of everything and anything possible. I did not want to experience any regrets after this dig was over. Considering it to be just as historically important to take a bulk sample of broken window glass home for study, I loaded the bucket nearly to the brim, then lugged it over to the truck (Figure 23).

Dave was continuing with his sifting in the loose dirt piles and had many new samples of blue and yellow insulators piled up in several locations for eventual retrieval. I decided to hack away at an adjacent cut not far from him. It wasn't more than a few minutes later that I heard Dave calling over to me that someone was driving onto the property through the main locked gate. It turned out to be Mike, the owner of the construction and heavy equipment company, whom we had met the day prior. We gave him a quick wave as he navigated over to his excavator. From his further actions it was obvious he was there to perform some general mechanical inspections on his equipment.

# THE CALIFORNIA ADVENTURE (PART 3)

(CONTINUED)



FIGURE 23 - RANDOM SAMPLE OF WINDOW-GLASS CULLET.  
NOTE THE GREEN MILKGLASS SHARD



FIGURE 24 - THE EXCAVATOR EXPOSING THE CULLET LAYER

About twenty minutes later Mike walked over and inquired about our progress. We responded that it was going well, but obviously a slow process. Then came those totally unanticipated words once again, “Would you like me to bring the excavator over and make some new cuts for you?” With no hesitation, we immediately accepted! Then began the mad scramble to gather up and remove the piles of insulators Dave had accumulated, as well as our digging tools that were scattered about. I was thinking how “incredible” this was, to have full service from the excavator for the third time, and this time from the equipment boss man himself!

Within minutes we could hear that familiar groaning of the excavator from about 30 yards away as its huge steel tracks rotated in our direction. Upon its arrival, Mike idled it down and asked where we wanted him to start. I first guided him to the far east end of the yellow zone for an exploratory cut to determine how far it actually extended in that direction. Then, standing up on the highest berm, I directed him further with hand gestures. With the tracks in a stable position, these excavators can spin around 360 degrees in both directions. There were two instances when I saw the bucket swinging around in my direction, and being unsure that Mike saw me, I scrambled in the opposite direction. Dave had the great foresight to pull out his cell phone and take some video and photos (Figure 24). After about 15 minutes we were satisfied with the new cuts, so we graciously thanked Mike, then hurriedly ambled through the new cuts and over to our assemblage of digging tools to rearm ourselves for the new prospects before us. It was only mid-morning and turning out to be another exciting day. The weather was cooperating, with long periods of sunshine between an occasional cloud or two.

Even though we had new cuts to explore, we made the initial decision to search for freshly uncovered glass in the newly generated tailings. Dave settled in at a large mound that was showing signs of promise. It was actually getting warm out in the full sunshine, so he set up a portable umbrella to provide some comfortable shade. He was uncovering a fairly equal mix of blue and yellow insulators, but mostly broken specimens. This was an area near the transition zone where the blue insulators intersected the yellow layer.

There was a great abundance of newly exposed cullet glass spread about at the north end. Rather than trying to gather more samples, it became more logical to stage samples in small groups and document them with photos. I first scampered about hunting for carboy tops and bottoms for the first group. Then I scanned the area for anything that resembled a milk bottle, creating another small pile. The final group consisted of the *Los Angeles Ice and Cold Storage* soda bottles. Since I had already gathered up many cullet samples for archival purposes, all three of these groups were individually photographed for future pictorial reference.

# THE CALIFORNIA ADVENTURE (PART 3)

(CONTINUED)



FIGURE 25 - A PORTION OF THE GLASS STRINGERS AND SLAG IN SHADES OF GREEN, AQUA, AND BLUE.

Now it was time to focus once again on the yellow zone. My intentions were to revisit the previous location where the yellow baby signals had been appearing, but my nagging curiosity led me to investigate the fresh new cut at the far east end. As I approached, I first noticed that there was indeed a continued layer of exposed glass at this furthestmost east end of the cut. A few pokes with my digging spoon exposed some oddly shaped pieces of slag glass. This was too interesting to put off for later, so I settled in at this location to explore it further.

This layer of glass was very dense, with less silt infiltration, so the digging was much easier. It consistently produced some of the most captivating slag and shard samples one could imagine. It started out producing chunks of aqua to blue aqua slag glass ranging in size from 1/4" up to 6" or so. Some had a light frothy appearance. Mixed in with this slag I would find pockets of aqua to blue aqua glass stringers in various captivating shapes and sizes. Some were fairly straight, some mimicking polliwogs, while others were twisted and curled into overlapping loops (Figure 25).

On occasion, a piece of an insulator would appear in this same layer. One of the first blue aqua insulator shards to appear was easily identified as a CD 133 California. This was our first new CD style found for the day, taking us to a total of 16 styles discovered on the site thus far, of a possible 24. The next was a blue aqua ear of a CD 260 narrow groove helmet, taking us to 17 CDs found. Many more pieces of blue aqua CD 133 and 260 narrow groove helmets were found, but no complete ones.

What was most interesting about this layer was the ever-changing variety of items it produced as I progressed into it. The pattern graduated from slag glass to stringers, then insu



FIGURE 26 (ABOVE) - SAMPLES OF THE YELLOW GLASS STRINGERS WITH DAMAGED CD 160S



FIGURE 27 (RIGHT) - YELLOW CD 191 TRANSPOSITION TOP & SAGE GREEN CD 210 REMNANT

# THE CALIFORNIA ADVENTURE (PART 3)

(CONTINUED)

lator shards mixed with stringers. Then suddenly up popped a complete blue aqua CD 134. The excitement level was really elevated when a couple of partial blue aqua solid pours appeared. These were mixed in with small bits of slag and stringers. Further digging produced more solid pours, most were solid domes only, and a few were complete short pours.

After working on this layer for about an hour I started to find stringers and remnants of yellow glass (Figure 26) mixed in with the current blue aqua shades. It was here that the pattern really changed, and this is when the next celebration occurred. With a gentle flick of my digging spoon, the next new CD for the list appeared. “Hey Dave, you’re not gonna believe this!” Stabbing his shovel into the ground before walking toward me, Dave replied, “Whatcha got, Dwayne?” I was only holding one small top of an insulator in my glove, but I excitedly replied, “It’s a CD 210 top in sage green! Now we know for sure they made them here! Add another CD to the list!” This was an archaeologically significant discovery. Even though most collectors have agreed for many years that the unembossed sage green CD 210s share the same characteristics and color as other embossed CGI Co manufactured products, no absolute proof has surfaced to confirm it (Figure 27). We were elated to have finally found the proverbial smoking gun!



FIGURE 29 - DIGGING YELLOW CD 208S FROM THE LAYER



FIGURE 28 - PARTIAL YELLOW CD 178 CALIFORNIA SANTA ANAS FRESH FROM THE LAYER

I worked this same layer for another 30 minutes, pulling out a few more blue aqua and yellow stringers. This was clearly a dumping zone for the glassmaker’s overflows, blunders, and discards. Occasional mishaps during the glass gathering and molding process were inevitable. Periodic maintenance around the molding machinery was apt to produce an abundance of scraps. Mold-warming pours would be tossed aside. Periodic maintenance of the glass furnace during shutdowns would produce surplus slag glass. Images began to dance around in my head of young adolescent boys pushing wheelbarrows or carrying buckets into the factory production area to gather up these scraps and shards for disposal. They would then transport the material to the dumping grounds, where it would remain until it was reused as cullet.

With a good number of samples collected from this intriguing location, it was time to revisit the heart of the yellow layer. I decided to begin at a newly opened cut that was adjacent to the same layer that was teasing us with mostly broken CD 160 baby signals the evening before. There were also more signs of CD 178s and 208s at this location, so we had hopes of finding some fully intact ones. The plan was to work this section inward and to the left, eventually intersecting the baby signal zone.

An hour of further digging produced additional yellow CD 178s (Figure 28) and 208s (Figure 29), but none were complete. Several held good prospects as they were being painstakingly uncovered, then a sharp edge would suddenly appear, sadly indicating damage. I worked this layer forward and to the left and right. As I worked to the left, toward the yellow CD 160 pocket, a stray piece of a baby signal would intermittently appear. As I worked to the right, I was enthusiastically enticed by two broken yellow CD 121 tolls. So, it was decided that I



# THE CALIFORNIA ADVENTURE (PART 3)

(CONTINUED)

would choose the toll path to the right and see where it would lead us.

It was then that we noticed a small compact car arriving on the site from the side gate, which seemed odd because we had, without doubt, locked the gate behind us. A woman exited the car and headed toward us, introducing herself as Todd's daughter, Carolyn. She appeared quite interested in our efforts and had many questions. With a kind-hearted willingness to assist, she requested to borrow a shovel and asked for a good location to start digging. Dave had plans to revisit an area of mostly blue insulator glass tailings, so we directed her to that specific location where she immediately went to work.



FIGURE 30 - CLEANED BROKEN SPECIMENS OF YELLOW CD 114 KEGS AND CD 121 TOLLS

Dave and I continued to work on the yellow layer. As I hacked to the right where the broken tolls were found, I exposed the edge of an oddly shaped piece of glass. From this small, exposed section, the curvature of the glass appeared unusual when compared to anything previously uncovered. It was yellow, but what was it? After a couple more stabs with my digging spoon a broken edge appeared. Since it was already broken, I worked at it with a little less caution until a very familiar-shaped dome appeared. I called Dave over for a peek, as I pried it out. Yes, it was missing a good portion of its skirt, but we now had a yellow CD 191 transposition top to add to our list of CDs found on site! (Figure 27)

Progressing on, the CD types continued to emerge in somewhat grouped subdivisions, with the broken CD 208 crosstops remaining the most prevalent in this sector of the yellow layer. Within one hour of uncovering the CD 191, we unearthed three specimens of yellow CD 114 kegs (Figure 30). For this period of digging, almost everything was coming out in pieces. Just as I was seriously contemplating a move to explore the other end of the layer, a very solid piece of glass was exposed and peered back at me with that familiar egg-shaped appearance. Sure enough, within minutes we had another large yellow egg rolling out from its firm nest in the hardened silt. It was becoming a routine expectation when wiping these down to see the *RPF* embossing on one end. In this case, we were pleasantly surprised when we observed the more familiar and traditional *California* embossing. Another first! (Figure 20)

At least two to three hours had passed since Todd's daughter, Carolyn, had joined us. She was maybe 50 yards from us out-of-site digging the backside base of a high berm. She finally appeared enthusiastically announcing she had amassed a sizable pile of insulators for us to sort through. We said our goodbyes and thanked her for assisting us. We grabbed an empty bucket and strolled over to the base of the tailings and found a nice grouping of predominantly blue specimens she had left for us. At least half were culled through and added to our study group.

Before the day's end, I really wanted to revisit the glassmaker's shards layer to see if anything much remained of it. It was not far, maybe five feet from the yellow layer when I last worked it, so I suspected the two might intersect at some point. I found more yellow glass stringers and a few insulator pieces, including our first partial example of a sage green CD 145 beehive. Due to the skirt being absent, we were unable to positively identify it, so we were left to wonder if it was originally embossed out of the mold with *California* or *Postal*? Then, as if out of nowhere, a large egg came into view. Since this layer was much looser and easier to dig through, it was in my hands within seconds. Everything from this layer was much cleaner due to the lack of silt, so I quickly inspected one end of the egg, then the other to confirm which embossing it was. Wait, what's this, where's the embossing? Sure enough, it was another first, a completely unembossed large egg in a beautiful shade of yellow-green, nearly citrine!

(CONTINUED)

With the sun setting and daylight slowly diminishing, we worked another hour until dark. We then loaded up the last of our evening's discoveries and called it a day at 8 pm. We considered it another very successful and fun day! We found 5 more CDs, for a total to date of 20, out of a possible 24 known CGI Company-produced CDs.

This is where I have to take a moment to explain a situation that greatly impacted the next day's activities on the site. Some readers may support the decision made; others may consider it insane. The following day was Sunday, May 12, 2019. Would I spend the day digging insulators, or spend the day with my wonderful wife, Ofelia, celebrating our 35<sup>th</sup> wedding anniversary?

Rather than spend the night at Dave's rental house for the third night, I thanked Dave for the continued offer, then made the drive home. I told Dave he had the site to dig on his own for Sunday and I would definitely be back on Monday. There are important dates in one's life, and then striving to remain a happily married man, there is that one IMPORTANT date.

As I was driving home my thoughts were ruminating on the last 3 days spent at the site, recalling all the incredible discoveries. The RPF eggs were at the forefront, a mystery that had been pestering me since I first laid my eyes on that baffling embossing (Figure 31). My focus was on a possible supply or utility company that had specified the embossed abbreviation, but nothing was falling into place. Okay, time to think outside the box, maybe these were the initials of a company officer, maybe the manager? Then, suddenly, like the proverbial lightbulb shining brightly above my head, it hit me like a ton of bricks! I knew the first plant manager was Robert Frist, so that matches the first and last initial... could his middle name possibly start with a 'P'? A quick google search produced the answer: The factory manager for CGI Co for at least the first 1.5 years was Robert Porter Frist, ala: R.P.F.!

Could this simply be a coincidence and the initials have a different reference? Think about this: There are 17,576 possible combinations of three letters in a row from the English alphabet.

With Frist's history as an inventor and holder of multiple patents, I'm personally calling it an absolute match. These eggs also have a unique design style, unlike any other U.S.-made glass guy wire insulator. It is possible that Frist was in the process of applying for a patent on this design, as supported by the *Pat Apl'd For* embossing. We can further assume that these trial samples were made with the new mold containing the RPF stamping. It is not unreasonable to speculate that this initial trial run of yellow to yellow-green glass eggs could very well have produced the patent sample that was to be included with the patent application. Within a short time thereafter, we know that Frist was relieved of his duties as plant manager, which involved some form of unspecified litigation with CGI Co (could it have been over patent issues involving these eggs?). Once both parties settled their differences, Frist's initials were subsequently removed and replaced with the *California* embossing. This all likely occurred before any initial orders were fulfilled for this newly introduced style, thus offering feasible evidence as to why none of the RPF-embossed eggs ever made their

way into our hobby prior to the 2019 dig. A search of patents comes



FIGURE 31 - CLOSE-UP OF THE ROBERT PORTER FRIST INITIALS ON A YELLOW-GREEN CD 1131 EGG

up empty, so even though the embossing suggests a patent was applied for, it apparently never happened or was not completed. Again, this is just a brief synopsis gathered from ongoing research, coupled with a measure or two of my personal hypothesis thrown in. More details are forthcoming in future research narratives.

After a three-day absence, I arrived home from Long Beach late Saturday night. I announced to Ofelia that I was spending the next day, Sunday, our anniversary day, with her. Being a very understanding wife and considering the great importance of the 'California Dig', she sat me down and very sincerely granted me the option of returning to the site to continue the dig on our anniversary day. That made it even easier to affirm my decision to spend this special day with her and resume the dig on Monday. ▲

***Part Four of the California Adventure will be continued in the next issue of Drip Points!***

# HUNTING A 1905 POWER LINE IN SOUTH WALES

BY JACK NESBIT ✨ NIA #10248 ✨ DRIP POINTS STAFF WRITER



PICTURE 1

It's been a little while since I wrote a hunting article, so I thought I'd go back to my Drip Points "roots", in a fashion...!

Way back in 2020 I wrote my first article for Drip Points accounting a hunt along a 1905 built power line in South Wales, where my friends and I managed to make the incredible find of a small number of "mushroom" insulators, some of the earliest high voltage insulators found in the UK yet. In March this year, Jake, Richard and I returned! Our second hunt of the 1905 Powell Duffryn Co. network was not to disappoint either!

The aim was to follow the same line but search a slightly wider area, starting at the bottom of the hillside and working our way up until the wild ground was interrupted by newer houses. We soon started to find some pieces of insulator – an early 'PAT-ENT' marked pork pie Hewlett with an absolutely fantastic glaze (Picture 1). Shame it was broken! This must have been a remnant from the large 30kv line built in 1915.

Soon after finding the fragments, we uncovered a large shackle in the undergrowth (Picture 2), damaged but definitely from the original line. Working our way further uphill, Richard hopped down into a small stream to search for pieces while me and Jake snaked our way either side of it. Next thing, Richard shouted that he'd spotted a spool in the stream bed. After disappearing under some brambles for a while he re-appeared with the find; a lovely miniature shackle with a Bullers trademark stamped on the top shed. Picture 3 shows Richard moments after retrieving the insulator!

This shackle will have carried a telephone wire and was mounted on an angle steel crossarm below the main arm.



PICTURE 2



PICTURE 3

We carried on through the Welsh undergrowth and soon began finding more evidence from the 1905 line that we had missed on our first hunt. Large pieces of a European PHK (Porzellanfabrik Hermsdorf) made style (contemporary with the British mushroom pattern) were strewn across the hillside, but frustratingly they were all in pieces (Picture 4)!

Next to a patch of ivy though I spotted something different, a piece of rusty metal resting on some rocks. I scrambled up to it and instantly recognised the shape; it was a pole top arch bracket! This would have originally held a mushroom, but surely it couldn't still be attached? I started moving moss and ivy away from the bracket and my heart leapt, as the insulator was indeed

still there (Picture 5)! Jake and Richard had now joined me and were sharing in the excitement. We cleared back the rest of the ivy and carefully lifted the bracket from the ground. Amazingly out came a Doulton made mushroom, with some original copper tie wire (Picture 6). What a find!

Close by was one of the small telephone arms with a broken trademark shackle lying beside it. We set the mushroom aside to collect on the way down, and carried on. The rest of the hunt proved enjoyable but unfruitful, so we decided to turn our attention to unexplored ground.

A little way up the mountainside, the now overgrown site of the Powell Duffryn mine and works was great fun to explore. Not much remained of the original buildings, but we soon came across a dilapidated terminal pole – full of woodpecker holes and stripped of insulators (Picture 7). Picture 8 shows a little porcelain escutcheon found while scratching around; note the mucky hands!

We searched a small hillside between a road and the pole and surprisingly managed to find a damaged



PICTURE 4

# HUNTING A 1905 POWER LINE IN SOUTH WALES

(CONTINUED)



PICTURE 5

mushroom half buried in the leaf litter, shown in picture 9.

From the old works, we made our way to the top of the site where the woodland ended and the incline to the upper mine started. A few original pole stumps survived, but the poles had long gone. Jake and I searched a stream next to the embankment while Richard stayed on the track bed.

Small water courses always seem to hold treasure in Wales and it wasn't long before we spotted an insulator! Despite being mostly buried in the stream bed, it was unmistakably one of the PHK deltas. We lifted it out and were excited to see it was the most complete example so far, though still damaged (Picture 10).

This gave us a boost, and so we carried on to the top – checking the stream as we went. On the way back down, Richards keen eye spotted another piece in the water. It was a second PHK insulator, still attached to a rusted channel arm and damaged on the top like the first one. As I lifted the arm up however, it revealed a second example almost completely buried in the mud. We all held our breath as I carefully pulled it free, was it whole? Indeed it was – in mint condition!



PICTURE 6

Another incredible find, and perfect that it was by Richard who had been determined that there was a whole one out there somewhere. These insulators are secured onto their pin by the use of hemp cord wrapped around the thread, and interestingly the pin on this example has a lag screw at the end to screw directly into the pole top. I've shown the star find in picture 11 in its very mucky post-stream-bed state. Pictures 12 and 13 show it cleaned up and free from its pin. Picture 14 gives an underside view, showing an extra ring under the top shed.

A third complete mushroom and a complete PHK type have given us hope for the rest of the Powell Duffryn network, and indeed for other lines of the same age. The hunt continues... 🍄



PICTURE 7



PICTURE 8



PICTURE 9



PICTURE 10



PICTURE 11



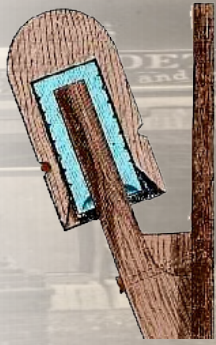
PICTURE 12



PICTURE 13



PICTURE 14



# Most About Wade-Type Insulators

BY MICHAEL TUCKER \* NIA #4051  
& DARIO DIMARE \* NIA #5302

The types of wood-covered glass insulators collectively known as Wade insulators have always interested me. They are named by collectors in the insulator world after the man, Jephtha Homer Wade (pictured right), who created them and would use them extensively on his expanding telegraph network.

Jephtha Wade lived between 1811-1890. He became involved in the earliest years of the telegraph industry, building some of the first lines linking Detroit with the likes of Milwaukee, Buffalo, Cleveland, and Cincinnati. In 1854, he consolidated his lines with those of Royal E. House, inventor of the House Insulator. This consolidated network became the Western Union Telegraph Company in 1856, with Jephtha Wade serving as general agent and continuing the development of new lines to connect new cities.

One of his major achievements was developing the California State Telegraph Company and Pacific Telegraph Company, which would be instrumental in the construction of the original Transcontinental Telegraph Line linking Sacramento and the west coast telegraph networks to St. Louis. The line was so successful that it would completely replace the Pony Express in October 1861. For this achievement, he was subsequently elected president of Western Union in 1866. He would hold the post for only a year before his failing health would cause him to resign.

After his retirement from Western Union, he went on to work with numerous companies and civic associations. His name is well known in the Cleveland area for his many accomplishments as well as philanthropic acts. There is much to read about if you wish to do



JEPHTHA HOMER WADE



further research, but we will focus on the insulators he helped develop and experiment with in the infancy of the telegraph industry.

Perhaps his idea of a protective wooden cover was born from the iron-clad House insulator (figure 1), because it predated the Wade insulator, but that is a matter of speculation. Perhaps he was still experimenting with the idea of a cover to protect the vulnerable glass, instead of the fragile and heavy iron covers, and he thought wood might be the direction for the industry to go. (Figure 2)



FIGURE 1 - THE HOUSE INSULATOR

60 MODERN PRACTICE OF THE ELECTRIC TELEGRAPH.

bracket and pole through the medium of a continuous stream of water.

93. THE WADE INSULATOR.—This is largely used in the Western States. Its construction is shown in Fig. 33.

A glass insulator, somewhat similar in shape to that last described, is covered with a wooden shield, to prevent fracture from stones and other causes, the wood being thoroughly saturated with hot coal tar, to preserve it from decay. The line wire is tied to the outside of the shield, in the same manner as when the glass insulator is used.

This insulator is usually mounted upon an oak bracket, as in Fig. 33, secured by spikes to the side of the pole or other support. When it is intended to be mounted upon a horizontal cross-arm it is placed upon a straight wooden pin, instead of a bracket. The pin or bracket is usually saturated with hot coal tar, in the same manner as the insulator shield.

Fig. 33.

FIGURE 2 - MODERN PRACTICE OF THE ELECTRIC TELEGRAPH (POPE, 1869, PAGE 60) DESCRIBING THE WADE INSULATOR



FIGURE 3 - CD 721 EXAMPLES

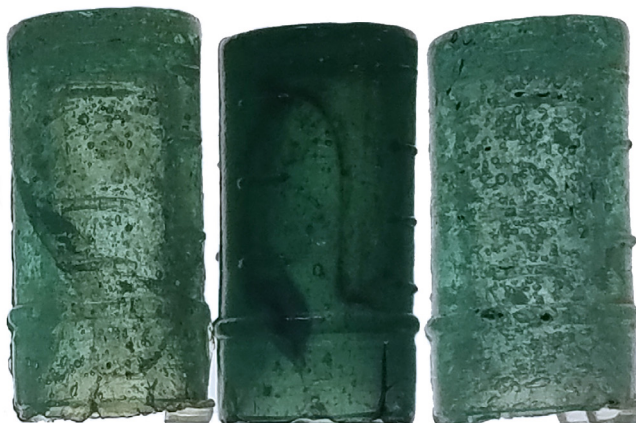


FIGURE 4 - CD 722 EXAMPLES



FIGURE 5 - CD 723 EXAMPLES



FIGURE 7 - A CD 723.3 INSIDE A SPLIT COVER, SHOWING HOW THESE UNIQUE INSULATORS FIT WITHIN THEIR PROTECTIVE OUTER WOODEN SHELL



FIGURE 6 - CD 723.3 EXAMPLES



FIGURE 8  
CD 723.5



FIGURE 9  
CD 723.6



FIGURE 10 - CD 724 EXAMPLES (ABOVE AND BELOW)  
724S ARE THE MOST COLORFUL OF THE WADE TYPES



FIGURE 11 - CD 724.3 EXAMPLES



FIGURE 12 - CD 725 EXAMPLES



The following Wades will be covered in our discussion: 721, 722, 723, 723.3, 723.5, 723.6, 724, 724.3, and 725. A representative group of each CD is pictured in figures 3-12, and a summary of the Wade-type CDs with their names and characteristics is in figure 14.

We will look at the following types: smooth sides, dot and dash, flared skirt type and concave. Some of this information may be a reiteration and previously covered, but I feel there are enough newer collectors that have entered the hobby, so that we need to renew it in their behalf. As well, I feel there may be some information presented that may not have been covered. For the sake of our discussion, I am defining a Wade type insulator as one having a wooden jacket or cover which envelops some type of glass cylinder. (Figure 7) This definition would exclude the 724.5 and its rare brother the 724.6 (the 724.5 being nicknamed the Wolfman because of the iron cover having fang-like projections pointing upwards, presumably for wire attachment), even though the glass insert is Wade like. (Figure 13). Perhaps someone will pick up the story about the Wolfman at another time in the future! As well, I may propose certain conjectures about insulators based on collaborative logistical thinking but it is not absolute doctrine and open to correction and change as our historical understanding slowly pushes forward.

In the early development of telegraph line insulators (mostly during the threadless era approx. 1845-1870), there were certain design requirements that were experimented with, such as insulative property, electrical leakage, wire connection, resistance to



FIGURE 13 - THE RARE 724.5 "WOLFMAN" AND ITS IRON COVER.  
NOT CONSIDERED A WADE DUE TO THE LACK OF A WOOD COVER

CD	DESCRIPTION	ORIGIN	INTERNAL DIMPLES	NOTES
721	Canadian Dash Type	Canada	--	Some have a slight taper, others are straight-sided
723	Dot & Dash	USA	11-18	The most common type
723.3	Smooth-Side	USA	--	Second most common type
723.5	Smaller Pin Smooth-Side	USA	--	
723.6	Baby Smooth-Side	USA	--	
724	Chester Type	USA	--	Some are unembossed Widest color variety
724.3	Canadian Chester Type	Canada	--	
725	Concave	US	3	

FIGURE 14 - A SUMMARY OF WADE-TYPE GLASS INSULATOR CDS

# MOST ABOUT WADE-TYPE INSULATORS

(CONTINUED)

breakage/damage and adherence to the pole (usually by a pin or peg of some sort). There are certain observations made of these insulators in which we will surmise may have been part of a design experiment. It was not known how specific ideas would play out in the field for practicality and longevity.

The most obvious flaw in the early design of insulators within this time period was the insulator to pin or bracket attachment. The constant climatic changes of heat/cold and dry/humid wreaked its havoc upon insulators by loosening the "glue" grip from the pin to the insulator. Among the Wade insulators, there are two CD's noted that had a design that could possibly counter this issue by using glass dimples on the internal pin hole for the "glue" to go into (CD 723 and CD 725). This is one feature of those two CD's of insulators that may not readily be apparent unless you are examining specimens or broken pieces. This is where it is invaluable to save shards, pieces and specimens of insulators for academic study (quality and nature of the glass used as well as functionality of poured features). A particular CD 723 of mine has a frost pop, with its top missing! This makes it convenient to look inside, which immediately leads to our next subject..



FIGURE 15 - THE INSIDE "DIMPLES" OF A CD 723

Let's look at the dimples on the inside of the pin cavity. I will say that counting the dimples wasn't an easy task, in some cases there was a judgement call for certain tiny glass depressions, whether or not to count them as dimples. (Figure 15) That's why I gave an approximate range of the number of dimples or pocks on the chart. (Figure 14) There seemed to be more dimples on the "spinier" 723's, those with pointier and more pronounced dots, than on pieces with more "worn" looking dots and dashes. The 725's seemed to be consistent with three dimples in the center of the pin hole, at least the ones Dario and I looked at. There is a variation of how spiny the dots are on some of

the 723's. Some dots are barely there on some insulators, while others are downright porcupine-like! I am uncertain if this is because of a different mold or if this indicates the mold wore out with the less distinct dot and dashes. Logically these dimples were made as "glue" pockets to make the insulator adhere to its respective pin. Many are found with the wooden pins in the insulator's pin cavity and removal (if it is chosen) can be difficult. This serves as a testament of the effectiveness of the glue to the pin connection.

In the realms of speculative thinking....is it a possibility that the smooth Wades were manufactured before the dot and dash types? Because of finding the flaw of either insulator to pin problem or even wood cover to glass adherence? In terms of numbers, is there a correlation between the higher prevalence of dot and dash Wades versus smooth Wades, and the effectiveness of the texture design for holding the wood casing in place (maybe it's telling)? We may never know!

The "glue" applied to the inner wood/outer glass, appears to be some sort of tarry pitch substance, and was somewhat successful in making the wood adhere to the glass cylinder, as there are many found with the wood remains still attached. In the case of the 725, the concave Wade, it is thought that the concavity was made to hold more "glue" and consequently more casing to glass adhesion. If you've ever held one of these 725's, they are one beefy chunk of heavy glass! I have reason to believe the tar or pitch used to hold the wood covers on also preserved the wood to a certain extent. Figure 16 shows a concave Wade thought to have the most amber swirling ever to be found in one of these insulators.



FIGURE 16 - HEAVY AMBER SWIRLING IN A CD 725



# MOST ABOUT WADE-TYPE INSULATORS

(CONTINUED)



FIGURE 17 - THREE DIFFERENT SHAPES OF WOODEN COVERS

The wooden covers vary in shape from a rounded top to a more pointed one. (Figure 17) The latter, I refer to as the Sasquatch head because of its unique shape.

Charles Chester & Company, at least according to the literature sources, used a flatter wood cover as well as a special metal band with 3 fingers to attach to the wire as seen in Figure 18 and 19.



FIGURE 18 - CHESTER INSULATORS AND HARDWARE

The wooden jackets were a great idea to resist glass breakage, but at the same time, this was its major downfall. When there was electrical leakage to ground, via glass cracks or internal breakage, the specific insulator in question, which needed to be replaced, was nearly impossible to find and be identified by the line service crew. And when it came to actually switching out the faulty insulator.... remember that hard to remove "glue" which held the insulator to the pin? It was during replacement time, that the inner glue connection (with its dimples) was, maybe too good! A man by the name of Louis A. Cauvet, would later apply a simple and yet brilliant idea of the use of internal screw threads on glass insulators, which would

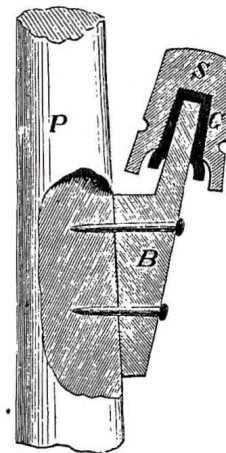


Fig. 78.

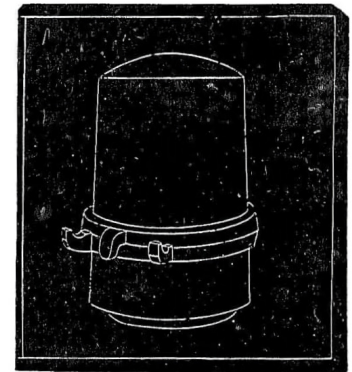


Fig. 79.

"The following engraving (fig. 78) represents a section of the modern Shield Insulator, now very much used upon telegraph lines, and manufactured by Charles T. and J. N. Chester of New York. It consists of the oak bracket (B), spiked to the pole (P). Over the rounded upper part of this bracket fits the glass (G), and this glass is protected by the tight fitting painted wooden shield (S).

FIGURE 19 - A PERIOD DESCRIPTION OF THE CHESTER INSULATOR

completely revolutionize the industry. This made for a secure connection with the pin and replacement of broken units was a breeze!

Although I do not have the information about an exact species of tree used or preferred for making the wood covers, there seems to be a general consensus among collectors who possess pieces with the

# MOST ABOUT WADE-TYPE INSULATORS

(CONTINUED)

original wooden covers, that a softer wood was used. There may be speculations as to why a soft wood was used rather than a hard wood. The obvious, being that it was easier to work the covers on a lathe machine when rounding the cover or jacket and also boring the pin holes. The other possible reason, that the softer wood could more effectively soak up any preservative, pitch or creosote. One collector had a Wade found in a sandbar in a river (wood still fairly intact) and said the wood still had a strong smell of creosote! The other speculation involves the wood pinching down and conforming to the dot and dash texture for a more secure connection.

In general, it seems the Canadian pieces have slightly thinner glass to them than the pieces from the United States. As well, from collector field data, they surmised that the baby Canadian Wade covers were surrounded by a thin metal shield which was held together by tiny nails and soldered together to protect the wood from moisture. As far as colors, the 723 (dot and dash) and 724 (Chester type), have the most variety. Some of the 724 Chester Wades are unembossed. I have also included a simple chart, showing the various types of Wades we discussed (Figure 14).

As far as historical documentation of Wade usage there is plenty! For this particular type of insulator, it is nearly unmistakable to spot when there is one in an old photograph. They are fairly large and are dark in appearance. Sadly, it is difficult to identify other types of threadless glass of that era unless there is a fairly close shot, when the photog-

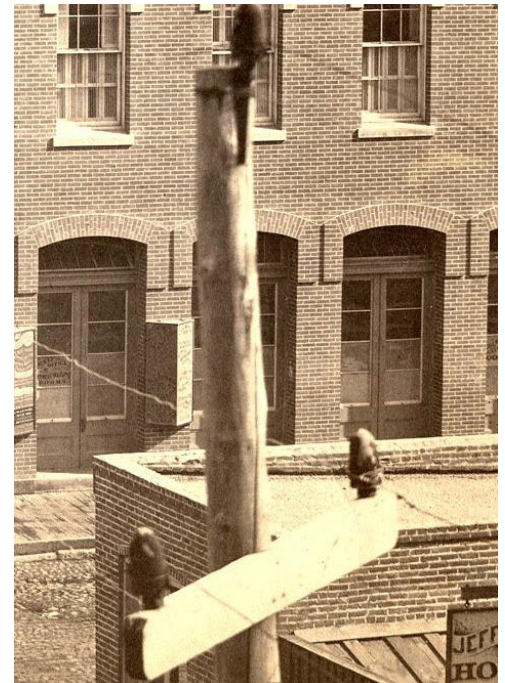


FIGURE 20 - WADES WITH THEIR ORIGINAL JACKETS AND PINS

rapher accidentally frames in some insulators. I've included several old photos, followed by the closeup of the photo where possible and also a description, if known, of the location). Figure 21 shows three Wades in Detroit around 1860. Figure 22 shows a single Wade on a pole along the Union Pacific Railroad and Kaw (Kansas) River at Fort Riley, KS, in 1867. Figures 23 and 24 and their close-ups show a telegraph station in Echo Canyon, Utah. Figures 25 through 27,



FIGURE 21 - DETROIT AND MILWAUKEE RAILROAD FREIGHT DEPOT WITH THREE WADES, DETROIT, MICHIGAN, CIRCA 1860



# MOST ABOUT WADE-TYPE INSULATORS

(CONTINUED)



FIGURE 22 - (ABOVE AND BELOW RIGHT) WADES ON A TELEGRAPH LINE ALONG THE UNION PACIFIC AND THE KAW RIVER AT FORT RILEY, KS, 1867



FIGURE 23 - (LEFT AND BELOW CENTER) ECHO CANYON TELEGRAPH STATION AND CLOSE-UP



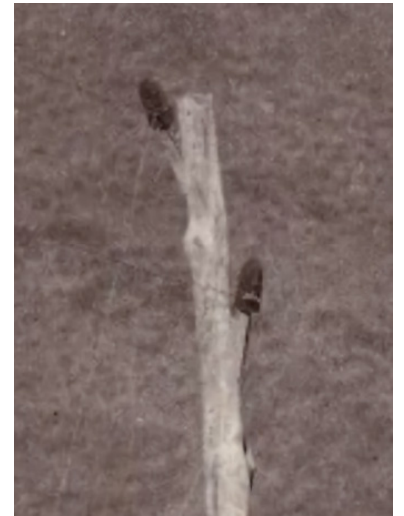


FIGURE 24 - ECHO CANYON (UTAH) TELEGRAPH STATION (LEFT AND CLOSE-UP OF POLE ABOVE)

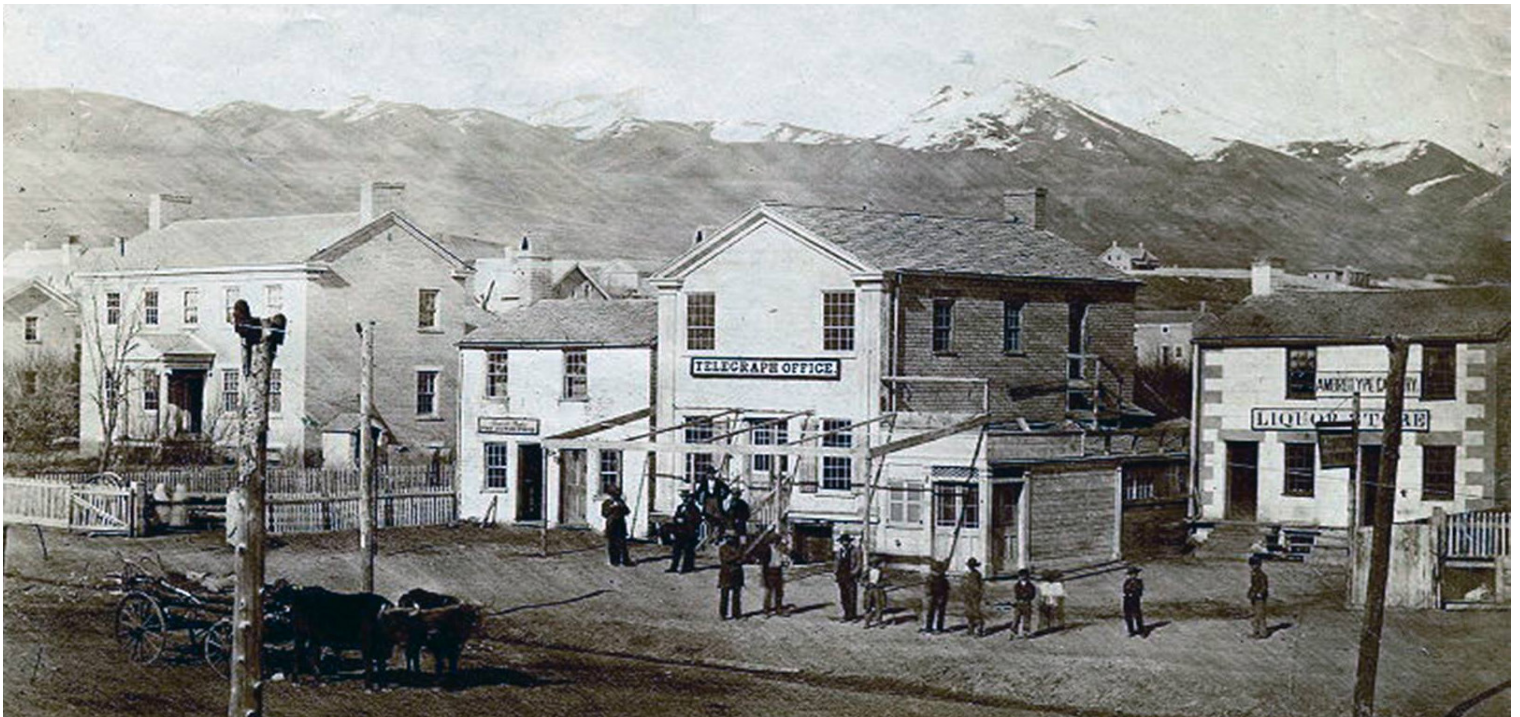


FIGURE 25 - SALT LAKE CITY, UTAH, TRANSCONTINENTAL TELEGRAPH OFFICE IN THE EARLY 1860S



FIGURE 26 - ANOTHER LOOK AT SALT LAKE CITY IN THE 1860S WITH THREE POLES WITH A SINGLE WADE ON EACH

# MOST ABOUT WADE-TYPE INSULATORS

(CONTINUED)



FIGURE 27 - A WADE ON A POLE IN SALT LAKE CITY IN FRONT OF THE WILLIAM JENNINGS MERCANTILE BUILDING, JUST SOUTH OF TEMPLE SQUARE

taken in the early 1860's, show various locations in Salt Lake City, which served as the "middle" terminus for the Transcontinental Telegraph of 1861.

Figure 28 is rather interesting. This shows the initial construction of the Union Pacific Railroad as it crossed the North Platte River, according to construction chronology, this would have been in late 1866. The Union Pacific Railroad did NOT use Wade insulators but they integrated the already existing Transcontinental Telegraph's Line into their bridge construction at this particular crossing.

There is also some art which acknowledges the existence of these early lines that employed the use of Wade insulators. Figures 29-31 were pen and ink drawings by the late William Henry Jackson (1843-1942), showing the Oregon Trail. The Transcontinental Telegraph Line of 1861 followed along the Oregon Trail in many stretches. Figures 29 and 30 depict South Pass Station and the trail at South Pass (Wyoming), and figure 31 shows the famous bridge over the North Platte River at Fort Caspar (near modern day Casper, WY).

There are also several museums that hold Wades in their collections. The early telegraph lines played a key role in the settlement of the western United States, so it is not surprising that they are showcased. Wades have been displayed at the Scottsbluff National Monument Museum (figure 33) and at the Pony Express Museum in St. Joseph Missouri. A Wade insulator can even be seen at the Union Pacific Museum in Council Bluffs, Iowa. (Figure 32) Figure 35 shows some Wades in a museum but I am uncertain as to the origin. Figure 36 shows an original pole and its respective insulators as found in Nevada and preserved at a historical site. Incidentally, the donor, Joe Nardone, is a historian who probably knows more about the Pony Express than anyone else (a Pony Expressologist!).



FIGURE 28 - WADES ON THE TRANSCONTINENTAL TELEGRAPH LINE AS IT CROSSES THE NORTH PLATTE RIVER IN NEBRASKA ADJACENT TO THE UPRR BRIDGE

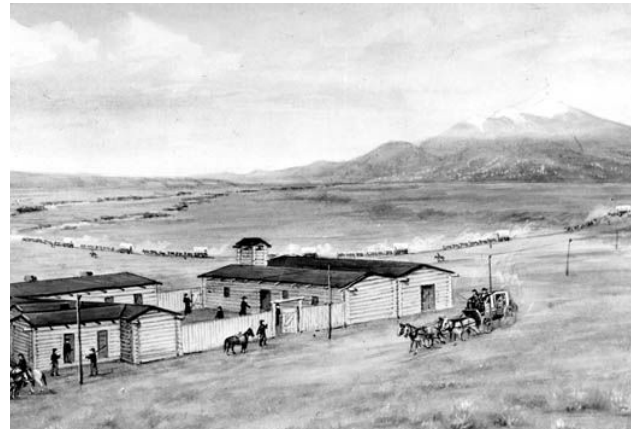


FIGURE 29 - A SKETCH OF THE SOUTH PASS STATION WITH THE TRANSCONTINENTAL TELEGRAPH LINE ON THE RIGHT



FIGURE 30 - SOUTH PASS, WITH A WAGON TRAIN ON THE TRAIL NEXT TO THE TRANSCONTINENTAL TELEGRAPH

# MOST ABOUT WADE-TYPE INSULATORS

(CONTINUED)

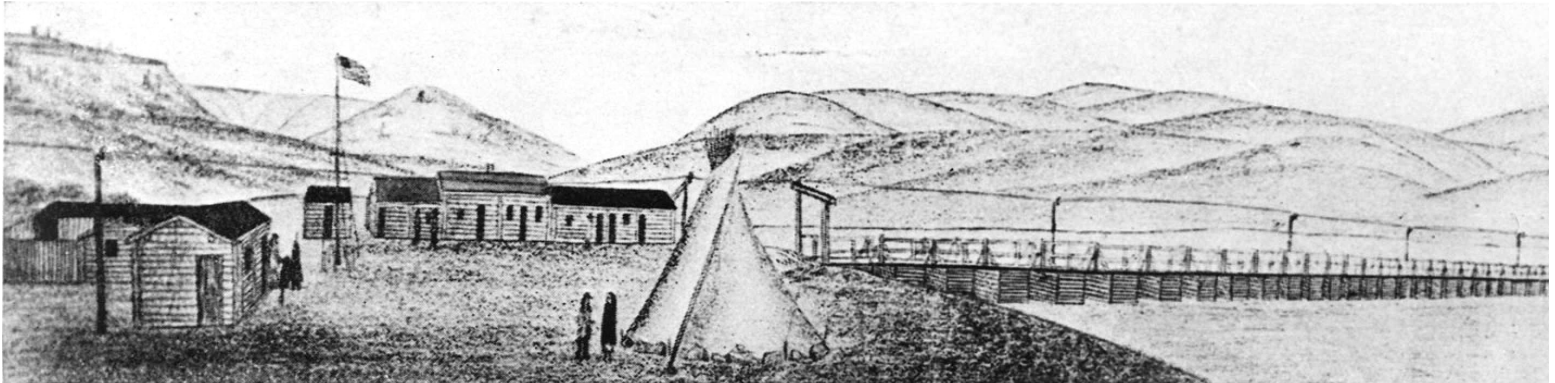


FIGURE 31 - FORT CASPAR, WY

We have put together a "cornucopia" of Wades on the next page, with wood covers and side brackets for your perusal. Eye candy! Don't even ask me about the solid pours! (Figure 37)

And finally, to end on a note of mystery, presumably an insulator, has multiple Wade-like bands on it, but looks more like an oversized light green root beer barrel candy with a pinhole (a classic whatzit)! (Figure 32) There are many more new discoveries to be made in the hobby!

I would like to again thank Dario DiMare for his collaborating with me and for his input and knowledge on threadless. We are lucky to have such great people in our insulator hobby! 🍷



FIGURE 32 - WADE AT THE UNION PACIFIC RR MUSEUM IN COUNCIL BLUFFS, IA



FIGURE 33 - WADE AT THE SCOTTS-BLUFF NATIONAL MONUMENT MUSEUM



FIGURE 34 - IS THIS AN UNKNOWN TYPE OF WADE? WE DON'T YET KNOW!



FIGURE 35 - FOUR MORE WADES IN A MUSEUM



FIGURE 36 - WADES ON A PRESERVED ORIGINAL TRANSCONTINENTAL POLE IN NEVADA (PHOTOS COURTESY ZAC WALTON)



FIGURE 37 - A CORNUCOPIA OF WADES WITH PINS AND COVERS IN ALL COLORS, SHAPES, AND SIZES

# DID YOU KNOW?

BY DON BRIEL \* NIA #7218



Do you know where to find insulator hobby information?

There are many resources available to help collectors in most aspects of collecting. Since you are reading this article, you are probably already

familiar with the *Drip Points* magazine, the official bi-monthly publication of the National Insulator Association (NIA). But in addition to *Drip Points*, the NIA is rapidly expanding the content on its website,

[www.NIA.org](http://www.NIA.org). There are also many links and references to other resources on the NIA website. Some will be noted throughout this article. Here are a couple of such useful links to hobby related publications and their current availability status: [www.NIA.org/archives/referenc.htm](http://www.NIA.org/archives/referenc.htm) and [www.NIA.org/archives/price.htm](http://www.NIA.org/archives/price.htm).

The NIA is nearly 50 years old and is currently averaging about 1,600 active members each year.

The NIA has an online library and supports many other facets of the hobby including annual scholarships, an annual National show, and support of regional and local shows. Membership dues are intentionally kept low and vary based on options selected.

Individual memberships can be extended to families at no additional charge to promote family involvement in the hobby. Much more information in many categories is available at [www.NIA.org](http://www.NIA.org).

Insulator Collectors On the Net (ICON) is an online insulator club with a huge library of searchable information. Membership is free



just for signing up. While membership is free, there are significant costs involved in providing the service to the hobby and all are provided by Bill & Jill Meier at their own personal expense. Donations are not required, but are deeply appreciated.

Upcoming insulator shows are listed. Members can post questions and notes to be read

by all members in real time or through a daily digest. There is an area for posting photos, selling insulators and related items, and much, much more.

There is also an option on ICON where you can do a lookup of other collectors in your area or any other area. Once you are a member you will be able to see if individual collectors in your area are open to visits, if they are willing to mentor new collectors, and a host of other information. You can have your information listed

<sup>1</sup> Visit: [r-infinity.com](http://r-infinity.com)

<sup>2</sup> Visit: [InsulatorPriceGuide.com](http://InsulatorPriceGuide.com)

<sup>3</sup> Visit: [insulators.info/books/canadian-pony-insulators.htm](http://insulators.info/books/canadian-pony-insulators.htm)

if you choose to. More information about ICON can be found at [www.Insulators.info](http://www.Insulators.info).

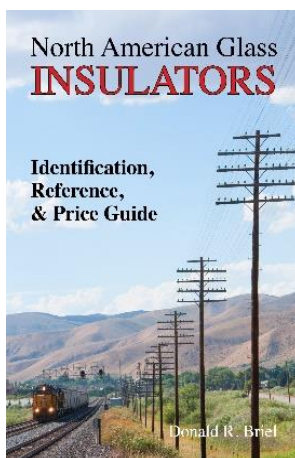
*All Insulators – Crown Jewels of the Wire* magazine is a quarterly publication of excellent quality. It is published by Shaun Kotlarsky. Visit: <https://allinsulators.com/magazine/> for full details and subscription information. Related to this publication is an “Insulators for Kids” program run by Michelle Kotlarsky that is well worth looking into for young collectors. Visit:

<https://allinsulators.com/magazine/ifk/> for full details.

There are numerous local insulator clubs located throughout the U.S. and Canada where collectors are welcome to join. Most local clubs hold various events throughout the year where collectors gather for fun, food, and learning. The types and frequency of events varies among individual clubs. A current list of clubs with contact information can be found at [www.insulators.info/clubs/](http://www.insulators.info/clubs/).

For those collectors that are into social media, there are a number of insulator groups on Facebook. Visit: [www.facebook.com](http://www.facebook.com). You will need to register with Facebook so you can login. Once logged in, do a search on “Insulator Groups”. There are many.

While there is a growing number of online resources available, the downside is that not all collectors are active on the same site. Each site has its advantages and disadvantages. You’ll need to decide which is most useful to you and may find it valuable to check multiple sites on a regular basis.



Besides formal organizations for collectors, there are numerous books and publications. While it was already mentioned that the NIA has a fairly complete list of publications, a few current books are worth mentioning here. Recent general guide books that are currently available include Elton Gish’s *Porcelain books*<sup>1</sup>, this author’s book: *North American Glass Insulators – Identification, Reference & Price Guide*<sup>2</sup>, Dudley Ellis’ book: *Canadian Pony Insulators*<sup>3</sup>, Lee Brewer’s book: *Crown Embossed Brookfield (CREB) Beehive Style Insulators*<sup>4</sup>, and most recently published, Steve Bobb’s book: *Catalog of Lightning Rod Insulators with Associated Brackets*<sup>5</sup>

Many excellent out of print books still exist in the hobby. They frequently show up for sale at insulator shows and online.

Insulator auctions are frequently a good way to find insulators, particularly those rarer pieces as well as information about them.

<sup>4</sup> Visit: [insulators.info/books/creb-reference.htm](http://insulators.info/books/creb-reference.htm)

<sup>5</sup> Contact: [sbobb@verizon.net](mailto:sbobb@verizon.net)



# DID YOU KNOW?

(CONTINUED)

There are a few fairly regular auctions including Bill & Jill Insulators<sup>6</sup>, Eagle Cap Collectibles<sup>7</sup>, and Pole Top Discoveries<sup>8</sup>. There are other less frequently held auctions that are also good sources of insulators. Most auctions are advertised in advance in this magazine and elsewhere. Once registered for each auction, one can receive email alerts for upcoming auctions.

There are many insulator shows occurring across the country throughout the year. Larger shows often have displays, lectures on various topics, printed materials, etc. All shows have

introduce yourself to as many others as possible. Ask questions and draw from others experience. Smaller shows provide wonderful opportunities to really get to know other collectors and become known.

While all of these resources are important, the best resources for any collector are other collectors. While there's competitiveness in finding that elusive jewel, I have found that most collectors are friendly and honest. Most are very open about sharing their knowledge of the hobby. Most will readily invite other collectors



2021 Farmington National Show

knowledgeable hosts, dealers and attendees that are always willing to answer questions, share information, or direct your inquiries to the right specialist. Just seeing the vast selection of insulators first hand is an amazing experience. You get to meet other collectors face to face, see examples of many rare insulator styles, embossing variations, colors, go-withs, etc. Smaller shows are often in unique relaxing settings. Jeanne and I have yet to attend a show where the many miles traveled to attend weren't far outweighed by the excitement, friendships, hospitality, and the genuine good time we had by attending. Shows are where the stories never end and where this hobby really comes alive. One of the most important benefits of any show is the social aspect. That can be at least as rewarding as insulator collecting itself. If you are new to the hobby,

to see their collections. Most are willing to mentor new collectors. And, beware, most will talk for hours about insulator related experiences. The NIA produces an annual directory of collectors. Visit: [www.InsulatorCollectors.org/purchase/](http://www.InsulatorCollectors.org/purchase/) to obtain a copy. It's just one more great way to locate other collectors. By the way, there's always an open invitation to visit the Briel home in Northern Utah. Come see the insulator collection, talk about insulators, and take home all of the free advice you can handle. Time permitting, we always enjoy going to lunch or dinner with visitors.



2018 South Lake Tahoe Show

*Immerse Yourself  
in This Hobby and  
Enjoy the Great  
Experiences!*

<sup>6</sup> Visit: <https://BillAndJillInsulators.com>

<sup>7</sup> Visit: <https://www.EagleCapCollectibles.com>

<sup>8</sup> Visit: <https://auction.poletop.com>



# THE NORTHWEST MISSOURI INSULATOR & BOTTLE SHOW

SHOW REPORT BY BILL SNELL \* NIA #2624

After the challenges of 2020 and 2021 and a lack of insulator shows, hosts Darryl and Margaret Wagner and the Missouri Valley Insulator Club (MVIC) gladly welcomed visitors back to the NW MO Show in Platte City, Missouri on March 19, 2022. The 18th show returned to the Platte County Fairgrounds, where dealers filled 75 tables with insulators, bottles, jars, telephones, signs, artwork, beer cans, and sundry small antiques. I managed to count dealers and attendees from eleven states – Missouri, Kansas, Iowa, Illinois, Indiana, Colorado, South Dakota, Oklahoma, Texas, and Arkansas!

The show featured five educational displays, plus the annual MVIC community display. Each year Mike Holewinski provides a display pole and club members contribute insulators based on that year's theme. We decided that 2022's theme would be our best or favorite finds since the last show: an "as-found" sooty CD 262 baby Columbia; CD 131.4 Pat. Dec 19, 1872; a light green Oakman helmet; two EC&Ms, one in aqua and another in dark olive green; an unembossed CD 151 Whittall Tatum experimental product; a blue Ohio Brass "stovepipe;" CD 162 H. G. Co. in a beautiful orange amber; a "carved top" Thomas pony; a honey amber H. G. Petticoat beehive; and two CD 124.3 Pat. Dec. 19, 1872 ponies. Thanks to all the MVIC members who generously shared their finds.

After two anxious years of waiting, the walk-through crowd was eager to get into the hall and shop. Dealers reported strong sales and the aisles grew crowded with foot traffic. In previous years we had some cross-attendance with the antiques show down the road, but those



THE MVIC COMMUNITY DISPLAY. EACH CONTRIBUTION WAS A FAVORITE OR BEST FIND SINCE THE LAST SHOW HELD IN MARCH OF 2019.

organizers chose not to revive it; however, that didn't seem to affect results. In fact, this was one of the best crowds the NW MO show has ever seen.

Some great insulators made appearances, either for show and tell or for sale, including smooth base H.G. signals in peacock, red amber, and honey amber. Dan Wagner showed his CD 579.6 unembossed with a wild mix of swirled purple, cobalt and aqua, while the CD 688 Folembrey he had for sale found a new home. Matt Whitlock brought



A BUSY SHOW HALL KEPT SALES BRISK ALL DAY LONG

# THE NORTHWEST MISSOURI INSULATOR & BOTTLE SHOW



(CONTINUED)

a EIV spool in a beautiful cornflower blue. Ronnie Gaylord had a new find: an odd porcelain piece that looks like it has a pin base, but it's cast in one piece.

Also of note were this year's miniature Mickey Mouse commemoratives, in clear with amber swirls. They sold briskly at the show, but If you want one of your own, I think Darryl Wagner has a few left.



We may have had a brief hiatus during the pandemic, but the enthusiasm never waned and we're all grateful to have shows again. Next year's show is already scheduled for March 11, 2023. Hope to see you there! ▲

THIS YEAR'S MINIATURE MICKEY COMMEMORATIVE WAS A BIG HIT: CLEAR GLASS WITH AMBER SWIRLS!



BARB AND JERRY WILLIAMS HAD A GREAT SELECTION OF PHONES, PHONE SIGNS, AND OTHER TELEPHONE ITEMS.



THREE GENERATIONS OF WHITLOCKS TRAVELED FROM IOWA TO ATTEND THE SHOW! HERE ARE PAT, MATT, NOLAN AND LARRY WHITLOCK



IN ADDITION TO COLLECTING INSULATORS, LEWIS PERKINS IS A TALENTED ARTIST WHO INCORPORATES INSULATORS AND POLE CONSTRUCTION IN HIS ART.



DENNIS AND JEANNE WEBER BROUGHT A GREAT SELECTION OF INSULATORS IN AN ARRAY OF COLORS



# THE NORTHWEST MISSOURI INSULATOR & BOTTLE SHOW

(CONTINUED)



BILL SNELL'S DISPLAY OF PINCO PRODUCTS AND HISTORY



BOB SCHWARTZ DISPLAYED GLASS KEGS IN A VARIETY OF STYLES AND COLORS



MATT WHITLOCK'S AGE AND A.G.M. DISPLAY FEATURED COLORFUL INSULATORS AND JARS



CRAIG SCHELOSKI'S VICTOR PORCELAIN DISPLAY, INCLUDING A RARE M-3490 IN BLUISH GRAY



TONY STEIN DISPLAYED COLONIAL ERA TRADE GOODS, WITH MUSEUM-QUALITY ITEMS DATING FROM 1540-1730.

# THE NORTHWEST MISSOURI INSULATOR & BOTTLE SHOW



(CONTINUED)



JENNIFER AND BOONE JEFFERS SOLD BOTTLES, STONWARE, AND INSULATORS.



LINDA AND BILL CONNELL AND BILL SNELL CHAT AT THE SHOW.



RONNIE GAYLORD (RIGHT) SHOWS OFF A TWO-TONE AMBER HEMI 19 HE BOUGHT FROM BOB SCHWARTZ



WHAT DO YOU DO WHEN YOUR SIGNIFICANT OTHER IS PREOCCUPIED WITH THE INSULATOR SHOW? BOND WITH THE OTHERS! MARGARET WAGNER, CAROLYN BERRY, AND TINA RIENSTRA.



CAROLYN AND BOB BERRY MADE THE TRIP FROM TEXAS



JIM HOFFMAN LOOKS FOR DEALS AT DAVE SHAW'S TABLE



COLE WHITLOCK HELPS GENE HAWKINS DURING PACK-UP

# WHEATON SHOW REPORT

BY RICK SOLLER ✱ NIA #2958

The only show in the world to offer a sizeable number of insulators and lightning rod collectables at the same show was held on Saturday, April 2, 2022 in Wheaton, Illinois. The show, officially named the Dupage Collectors Expo, was held in two adjoining buildings at the Dupage County Fairgrounds and hosted by Bob Stahr and Rick Soller. A total of 13,200 square feet of space was available for the show, more than the 8,901 square feet at this year's Gettysburg National. Besides insulators and lightning rod collectables, dealer wares included fruit jars, bottles, lineman's tools, railroad memorabilia, porcelain signs, hobby books, brackets, and a variety of tabletop antiques.

59 sales tables were occupied by dealers and 88 collectors walked through the door, making it the largest show of this type within a 300-mile radius (Springfield, OH is a little more than 300 miles away). Another 8 tables held auction lots. Altogether, the show featured dealers from 9 different states (Illinois, Indiana, Iowa, Michigan, Missouri, Nebraska, Ohio, South Dakota, and Wisconsin).

As collectors entered the building, a table filled with literature was available. Since the club is a member of the NIA, it receives a copy of the Drip Points, and these were offered for free to interested attendees. Flyers supporting upcoming shows, bottle publications, and the NIA were also provided. Quite a few of these went home with people.

A table of free insulators was full at the start of the show and refilled again early on Saturday. By the end of the show, only about 30 insulators were left and these were saved for next year. Several young collectors with their parents were seen picking pieces to add to their collection. Even some line posts disappeared from under the table although the new owner isn't known.

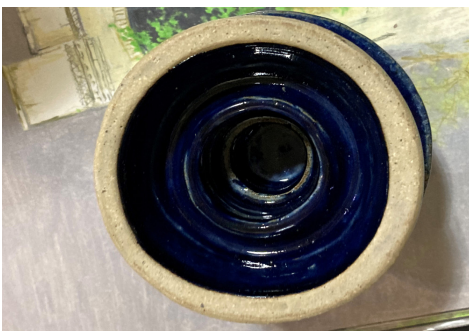
To encourage people to get a sales table, a dealers-only auction was held Friday evening, after dealers had a chance to set-up. 78 lots from 8 dealers were offered in the auction, resulting in total sales of \$619. Sellers were charged 10% of the proceeds to help support show expenses. Lightning rod balls were offered first in the auction with one lot of 8 balls selling for \$66. On the other hand, several box lots of insulators sold for a price that averaged out to less than ten cents an insulator. A couple lots consisted of around two dozen fruit jars and the last 24 lots consisted of recently removed insulators, lightning arrestors, and brackets. A large number of guy strains with a variety of connecting methods were sold. Some of the unique pieces are pictured. One is a plastic cable spacer from Preformed Line Products with the additional marking of P/N 5060150. Riley Armstrong bought a lot that had two of these in it, kept one and sold the other. Rick Soller bought the unlisted guy strain. It is 8-3/4" tall x 5-1/2" wide. There is a white marking on the end that looks like a triangle in a circle.

Several never-before-seen ceramic whimsies were offered at the show by Alex Hoffman of St. Louis, Missouri. These were incuse marked Roc & Shay Co., were well made, and came in a rainbow of glazes. Although they were pricey, I bought one for \$80 to have an example in my collection in case future collectors did not realize they were

LEFT: (INCUSE ON THE OPPOSITE SIDE) NO 111, HAS AN INNER SKIRT, 5" WIDE X 3.5" TALL.

CENTER: SAME DESIGN WITH A FLAT BROWN GLAZE.

RIGHT: A WHIMSY THAT LOOKS LIKE A HI-TOP.



# WHEATON SHOW REPORT

(CONTINUED)



PLASTIC CABLE SPACER



WOOD BRACKET USED IN MILWAUKEE



GUY STRAIN WITH TRIANGLE  
IN A CIRCLE



not real. It had 8 teat rests, a 3/4" pinhole that had some kind of threading, a creamy white glaze on top, dark blue on the edges of the umbrella and skirt, and brown glaze under the umbrella. On the reverse side was the incuse marking of No. 111. The marking looked like it might be a stamp, but Alex said it was done by hand.

Some very nice insulators were brought to the show by the walk-in crowd and quite a few of them changed hands. An aqua, no name CD 731 found a new home. An olive yellow green CD 126 Brookfield was shown around the two show halls before an acceptable offer was made. A unique wood bracket used in Milwaukee to conserve metal during the second world war made an appearance and went home with a collector from St. Louis. The last time I saw one of these for sale was in 2002. 🐱



**SPECIALIZING IN**  
**INSULATORS**  
**FROM OUTSIDE**  
**NORTH AMERICA**  
*BUY ~ SELL ~ TRADE*

**NATHAN HOLMES**  
 MAVERICK@DRGW.NET  
 719-235-1286  
 NIA #4002

**Now Buying and Selling Insulators**

**ZnZ Ventures**

Roger & Beth Ziesak



From single insulators to collections of all sizes.  
 Glass or porcelain, tell us what you've got  
 or let us know what you're looking for.  
 Also dealing in Railroadiana and Collectable Coins.

406-239-1646

Ziesakventures@gmail.com



# ROHDE RANCH SHOW REPORT

BY ROGER ZIESAK \* NIA #8919

Another fantastic show was to be found at the Rohde Ranch. Bill and Kat did an outstanding job of pulling everything together and having tables, chairs, snacks, drinks, and full-on meals for, by some estimates, a crowd of over 200 people. There was a terrific variety of glass and mud as well as a good variety of go-withs including bottles, lightning rods, porcelain signs, etc.

Visiting was non-stop and I forgot all about my work stress and just enjoyed the time. The color comparison of EC&M Arizona blues was really interesting and informative and there were several experts there that answered a bunch of questions and got to look at some cool stuff themselves.

Thanks to all who attended and made this a great show and a huge thank you to an amazing Bill and Kat and their helpers for truly pulling off a great show and providing a really good time for all of us.



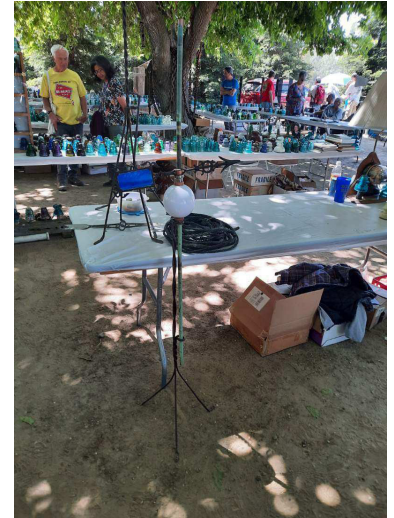
RON YUHAS & JUSTIN MARTIN



2022 GETTYSBURG NATIONAL TABLE



JUSTIN MARTIN'S TABLE



NICE GO-WITHS



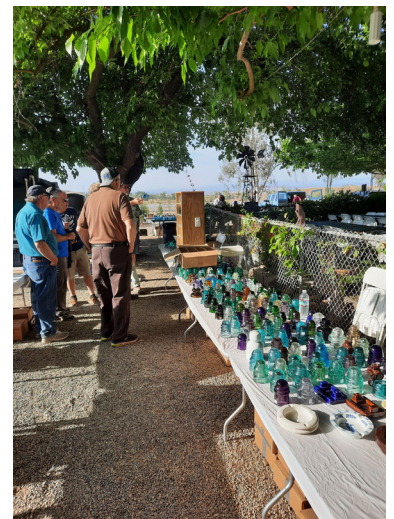
NICE PORCELAIN SIGN



BEN KIRSTEN TALKING INSULATORS



LOTS OF ATTENDEES AT THE SHOW



SOME OF DWAYNE ANTHONY'S TABLE



# ROHDE RANCH SHOW REPORT

(CONTINUED)



Lots of bottles at the show



COLIN JUNG AT HIS TABLE



BRIAN SMITH'S TABLE



MORE GREAT GLASS



LOU HALL'S TABLE



MORE GREAT GLASS



THE EC&M BLUE COLOR COMPARISON, REALLY SOME AMAZING COLOR.

THANKS TO ALL WHO BROUGHT PIECES TO COMPARE



NATHAN LAMKEY AT HIS TABLE



ROGER & BETH ZIESAK'S TABLE



JOANNE WOOD & BETH ZIESAK  
BEHIND TABLE 2



A NICE U-936 THAT I PICKED UP  
THANKS TO SCOTT PRALL

# A FEW SNIPPETS ABOUT THE AUSTRALIAN CD 423

BY ALAN DAWSON

Here I offer a brief rundown of history of production of the CD 423 for your readers. My collection consists mainly of insulators that my wife and I found on our hunts. Australian Glass Manufacturers (AGM) commenced production of glass insulators in Australia around 1926. AGM manufactured other glass items as well as insulators and they were all embossed with the trademark AGEE for Australian Glass. See the AGM Bottles section at the end of this article for more on that.

In 1940 AGM amalgamated with Crown Crystal Glass (CCG) which took over production of glass insulators during the period 1940 - 1950. AGM resumed the manufacturing of insulators commencing 1951, and experienced collectors agree that nothing has been date coded beyond 1962. The first CD 423s were manufactured by CCG in 1943, and AGM continued their production until 1960. The CD 423 and CD 430 were the most common and most widely used glass insulators in Australia.

The CD 423 was AGM's competitive answer to the small porcelain subscriber bells in common use at the time. By far the most common subscriber bell used was the U1493. There was a huge range of shape variations within the U1493, but they had typical dimensions of approximately 3 and 1/4 inches x 3 and 1/4 inches. The majority were white or off-white. A minority had colored glaze. Many were quite crudely finished. (Figure 1, below)



FIGURE 1 - U-1493 SUBSCRIBER BELLS IN CRUDE AND COLORFUL GLAZES



FIGURE 2- A SELECTION OF CD 423S

In Figure 2 above, you see an AGM on the left and in the center, as well as a CCG on the right. The center insulator was cast in a repurposed CCG mold. Notice the subtle difference in profile between the AGM on the left and the two insulators center and right. The difference can be seen most obviously under the bottom wire ridge.



FIGURE 3- DATE CODE ON AN AGM CD 423

The center insulator from the first photo, isolated and shown here enlarged in figure 3, also has a ghosted **49** on the back next to the AGM date code. On this insulator, **5**:::: indicates the decade with the 5 (1950) and each vertical pair of dots indicates an additional production year, in this case five additional production years, or 1955. Consider another case. **4**::: where the 4 indicates 1940 and three additional production years are indicated by three vertical pairs of dots, or 1943. This was the standard method of date coding used by AGM, although **59** was used for 1959, and **61** for 1961. One apparently isolated example used roman numerals and there may still be others to discover.

# A FEW SNIPPETS ABOUT THE AUSTRALIAN CD 423

(CONTINUED)



A ROSE TINT CCG INSULATOR NEXT TO AN ICE GREEN CCG "LEANER"

You can also see that there is a clearly embossed 31 on the front of this insulator in the first photo. That is a mold number. Mold numbers appeared on Aussie insulators from 1930 onward. A number of collectors strive for complete sets of mold numbers for each CD style.

At present one of our experienced collectors is investigating the possibility that the CCG 1942, CD 422 mold was repurposed to produce the CCG 1943, CD 423 insulator. The font style and embossing placement strongly suggest that this is the case. ▲



A STEELY ICE BLUE CCG 423 WITH CARBON STREAKS NEXT TO DIFFERENT ROSE TINT 423 WITH A 1945 DATE CODE (4:.....)

## AUSTRALIAN GLASS MANUFACTURERS MORE THAN INSULATORS

Australian Glass Manufacturers produced a wide variety of glass products other than just insulators. Seen below are several types of old bottles with the AGM logo appearing on the bases. The logo consists of a flat topped upper case A with an upper case G incorporated in the top part of the A, and an upper case M in the lower part of the A. Other jars were marked "AGEE", similar to the CD 490 insulators.

To see a selection of other AGM glass items, visit:

[tinyurl.com/agmglass](http://tinyurl.com/agmglass)



ABOVE: AN AMBER 423 WITH A LARGE SLUMP IN THE DOME GLASS

LEFT-TOP: AN AGM WITH GHOST EMBOSSING

LEFT-BOTTOM: A LARGE DOME BUBBLE IN A STRAW PIECE



# LSIC NEW BRAUNFELS INSULATOR TAILGATER

BY BOB MACHANN \* NIA #8235

The Lone Star Insulator Club tailgater was held on April 30, 2022 at the home of John and Leona Hall in New Braunfels, Texas. I was up at 5:00 a.m. and soon on the road. After a fuel stop and a drink stop, I arrived at a quarter past nine o'clock. I thought I was late, but I was among the first visitors there. About 25 attended, including Margaret Cox, Lisa Feagins, John Foster, David Saucedo, and Jimmy Zagorski. An amber CD 112.4 Hemingray, a Windex blue CD 162 Westinghouse, two CD 701.6 eggs, and an olive green 1871 patent CD 134 were seen at the meet, as well as a CD 162 H.G.Co. signal that could be described as "whiskey olive." Tom Miller went home with a CD 331 Pyrex to add to his collection.

Among our insulator dealers were:

Chris Renaudo – aqua CD 138 Postal, cobalt Russian C3H, emerald green CD 112 Brookfield SDP, sky blue U-243

Israel Jones – two brown GE suicide box cutouts, dark aqua CD 254 Hemingray, olive amber CD 152 Brookfield, snowy green aqua CD 106 Star

Jack Roach – CD 152 McLaughlin, CD 306 Lynchburg, Hemingray turtle, yellow green CD 145 American

John Hall – Muncie, Coolie Hat, CD 333 Prism, dark aqua CD 292.5 Knowles

Keith Brooking – Twiggs, carnival TS-3, fizzy lavender CD 170, violet blue Grand Canyon beehive

John Wiggins – amber CD 252 Hemingray Lowex, green CD 134 KCGW Fairmount, amber swirled aqua CD 145 Star, CD 105 American

Frank Shiels – olive amber CD 219 Hemingray Lowex, olive green CD 113 Star, dark aqua CD 200 #2 Tramp, royal purple CD 190/91 Diamond

Mike Lyell – Hemi blue || beehive, yellow green CD 121 U.S. Tel. Co., mustard olive CD 102 Diamond, green CD 160 California

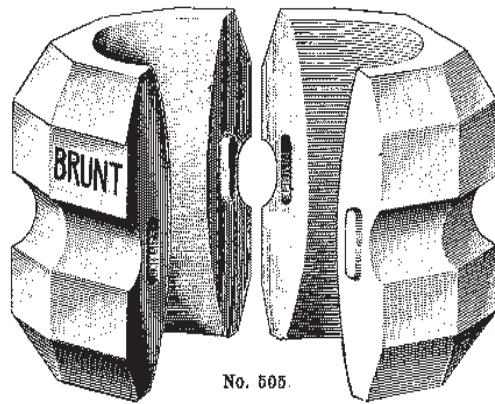
Gary Fine – dark aqua CD 117 &, opal CD 128 E-14B, aqua CD 252 Knowles, CD 166 California in sage and smoky purple.

At noon, it was lunchtime. The meal was blessed, and we lined up to fill our plates. Our meal was barbecue with baked beans, onions, pickles, cole slaw, and Butter Krust Bread. The desserts were cake and cookies. After the meal, we did some more dealing and shared insulator-hunting stories. As the afternoon grew hotter, the dealers began to pack up and leave. I made one of the last deals before heading home. Thanks to John and Leona Hall and Keith Brooking for inviting us to New Braunfels for some insulator fun. Until our next gathering, happy collecting! 🍷



# TREE INSULATORS (PART 3)

BY DOUG RUSHER \* NIA #1773



## VICTOR SPLIT TREE INSULATORS.

STANDARD No. 22.

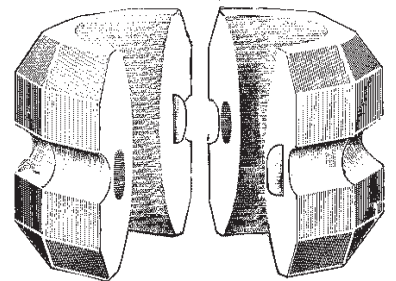
Trade No.	Price	Code
505	per 1,000.	Word.
1 5/8 in. high, 2 1/4 in. long, 2 1/8 in. wide, 1 in. bore, standard packages contain 1,300.....\$42.68 Broom		

No. 505.



## STANDARD No. 22 (Victor.)

STANDARD PKG.  
Bbl. lots—(1300.)  
LIST PRICE  
\$42.68 M.

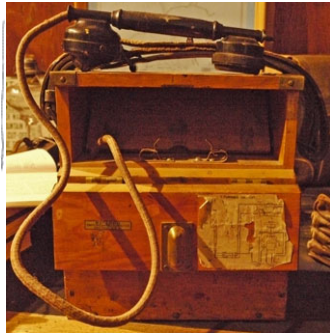
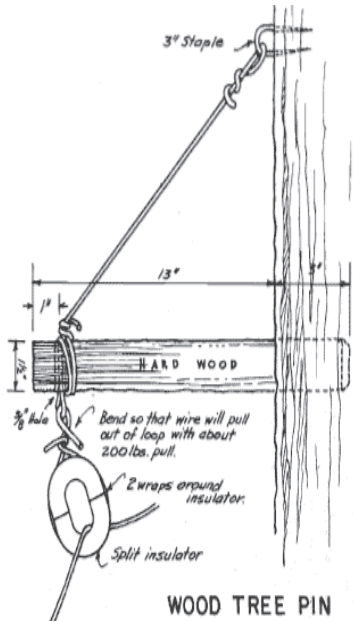


Height,	1 5/8 in.
Diameter,	2 1/8 "
Hole,	1 "
Groove,	1/8 "

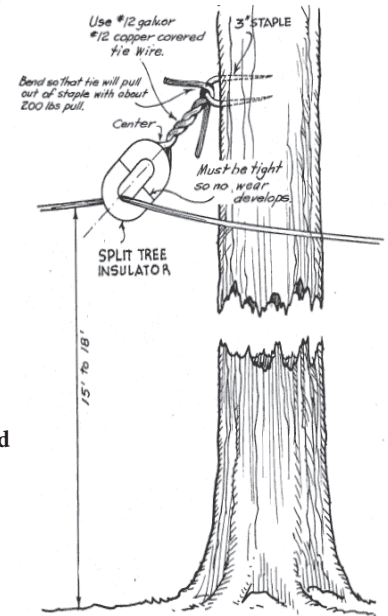
# TREE INSULATORS (PART 3)

## US FOREST SERVICE TREE INSULATORS

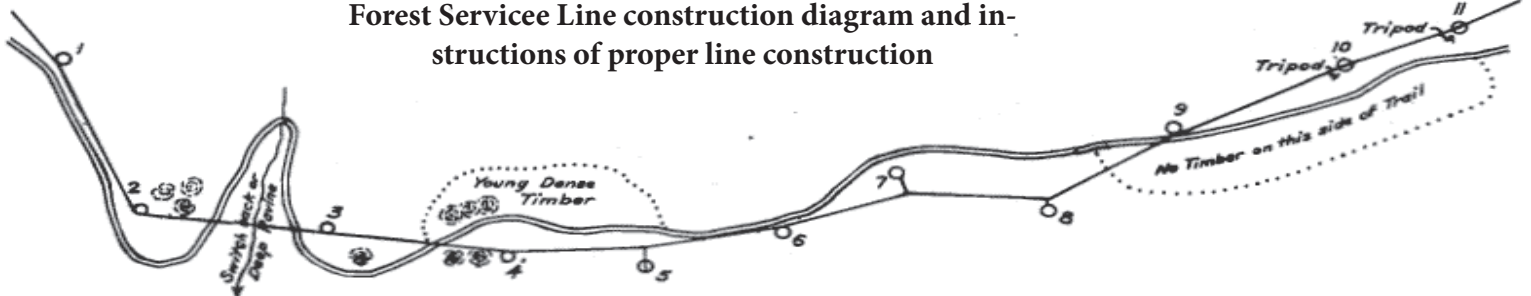
I worked for the forest Service in the mid 70's and ran across a few of the early lines that went to the lookouts from the main HQ Buildings, where there was a large Board with ringers on it and marked from each lookout, so if a lookout was trying to contact HQ those bells would ring and we could communicate with that lookout, there was also a line that ran from the HQ building to the Rangers home so he could be notified in the event of a fire or someone needed help, most of the lines were composed of thomas Donuts or the Mc-combs Oct styles, we had one line that was wooden side pins with McLaughlin No16's in deep emerald green and they had already grown into the trees



This was the standard portable telephone used by the forest service. It weighed 19 pounds, and was 10 1/4" high by 10" wide by 5" deep. The heavy duty Eastern Birch case was coated with two layers of spar varnish. You turned the crank on the right to ring and pushed the switch on the handle to talk.



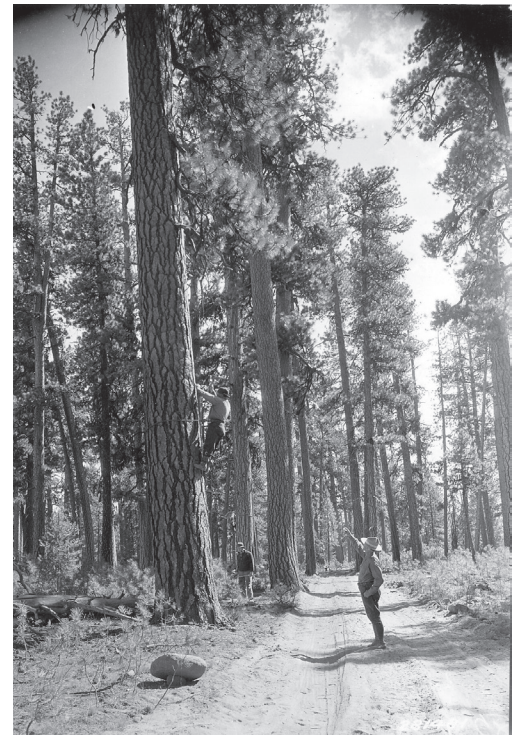
### Forest Service Line construction diagram and instructions of proper line construction



- 1 Pull is away from tree.
- 2 Tree too large to climb: necessary to use to keep line in sight of trail.
- 3 Pin necessary to keep line away from tree.
- 4 Tree OK. Tie high enough to clear trail.
- 5 Set pole: impracticable to set pole near trail account of rock; use longer hanger.
- 6 Tree pin necessary to keep line away from tree.
- 7 Long hanger to prevent too sharp angle in line.
- 8 No other trees available nearer trail.
- 9 Necessary to cross trail. Tie high to give clearance.
- 10 No trees available - rocky ground.
- 11 No trees available - rocky ground.

#### Suggestions for Selection of Tree Ties for Line Along a Trail [1938 Manual]

Note that the wire would pull into trees 2, 3, and 6. A pin, or a stick that held the wire away from the tree, was used to keep the wire from electrically contacting the tree and shorting to ground. I think I have never seen one, so most of these must have rotted away by now. The Jemez report too states that only one pin / compression configuration was found, among many tie / tension setups. Telephone Tree Hooks, pictured later, could also be configured to push the wire off the tree to prevent electrical shorting. See the 1938 manual for various illustrations.





# TREE INSULATORS (PART 3)



## Holmes Style A 1 Pin

by  
Andrew Gibson



I was talking with Mark Kerr about the possibility of creating a replica of the Holmes Style A1 pin -- I knew he had done wood working with pins before and wanted to see what he thought was possible. His immediate response was, that it would take a lot of work because you'd actually have to make the pin out-of-round so that when you cut it in half the amount of wood you lost would be just right to make the pin round again so that it could fit. I had figured it'd be tough, so that didn't surprise me too much. But then a few hours later he got back hold of me with some pictures of what he'd just done -- he'd actually gone ahead and make a version that looks pretty darn good! He shipped it off to me, and I've had some fun with it. Now I need to get the top part to a Holmes tree insulator, preferably with a Brookfield insulator, so that I can display this permanently!

And, needless to say, many, many thanks for Mark for taking the time and effort to make this for me. I greatly appreciate having it!



I want to give Credit to the fellow collectors who helped me with this article and reference Material that was supplied.

**Andrew Gibson** who supplied most of the fantastic photos for this article, and tons of information for this article.

**Lou Hall** who has spent countless hours of research and sharing his knowledge on different tree insulator companies.

**Elton Gish** for his outstanding resource website for finding information on Insulators.

**Chris Hedges** for his photos of the Pierce Tree Insulator.

**Chris Cotnoir** for his pics of the Holmes Tree Insulator in the Log

**Barrett Nicpon** for photos and information on the Slater Insulator.

NIA.org for Insulator Reference Catalogs, Insulator Reference Material.





# 2<sup>nd</sup> Annual Border States Antique Show & Sale



Saturday September 17, 2022

9:00 AM to 3:00 PM

**Free Admission**



**Douglas County Fairgrounds**

**2120 Harper St. Bldg 21, Lawrence, KS 66046**

Southeast corner of Lawrence, 23<sup>rd</sup> St & Harper

Great venue, good lighting & 100+ tables of antique insulators, bottles, jars, postcards, telephones, advertising, lightning rod balls & arrows and other miscellaneous table-top antiques & collectibles.

Breakfast & lunch available on site.

FREE insulator & bottle appraisal available.

## **BUY – SELL – TRADE**

For information and/or a show packet, contact:

**Darryl Wagner**  
14615 Skyview Ave.  
Smithville, MO 64089  
816-719-0801

OR

**Mark Law**  
5129 NW Arroyo Dr.  
Topeka, KS 66618  
785-224-4836

[insulators@dwagnerkc.com](mailto:insulators@dwagnerkc.com)

[kansasbottles@gmail.com](mailto:kansasbottles@gmail.com)

Show managers not responsible for accidents or losses.



# UPCOMING EVENTS

JUNE 2022 – AUGUST 2022



**June 4, 2022 (Saturday)**  
**LONDON, ONTARIO, CANADA**

**South Western Ontario Spring Insulator Swap** The South Western Ontario Spring Insulator Swap will be held in a spacious back yard at the home of John and Carol DeLarge at 1884 Aldersbrook Rd London, ON. Set up at 9:00 AM, trading and dealing begins at 10:30 AM, Lunch provided at 1:00 PM. Everyone is welcome to come and set up a table or browse through the grounds to view the wide variety of insulators for sale or trade. The meet will be held rain or shine. \$10 fee for those wishing to set up a table to help cover the cost of food & beverages. Please note that there will be only sufficient food & beverages available for those who RSVP. If you wish to set up, please bring your own table if at all possible as there will be only a limited number on hand. RSVP by May 28th, 2022. Contact Barrett Nicpon at (519) 670-8796 or [barrett.nicpon@gmail.com](mailto:barrett.nicpon@gmail.com) for more information and to RSVP.

**June 4, 2022 (Saturday)**  
**PERRY, IOWA**

**25th Annual Hawkeye Insulator Swap Meet** Hotel Pattee, 1112 Willis Avenue, Perry, IA. Saturday June 4th, 2022. Doors open at 9:00 a.m. and close at 3:30 p.m. Tables are \$25 and dealer setup starts at 6:30 a.m. Hosted by Skip Lowe (641) 751-6856 [sllowe@iowatelecom.net](mailto:sllowe@iowatelecom.net).

**June 11, 2022 (Saturday)**  
**PERKIOMENVILLE, PENNSYLVANIA**

**49th Annual Pennsylvania Insulator Show And Sale**, Saturday June 11th. Hours 9 AM till? FREE ADMISSION. This is an Outdoor Show held at Arlene Wambold large side yard for all these years! Address 1837 Perkiomenville Rd, Perkiomenville, Pa. 18074. Lunch provided, Steve's famous pulled pork and other goodies! Please get ahold of either Arlene or myself when we get closer to the show date if you want to contribute food. Bring your own setup table and chairs. For more information contact Steve Bobb at [sbobb1@verizon.net](mailto:sbobb1@verizon.net), call or Text (610) 639-1308, Arlene Wambold [acwambold2@verizon.net](mailto:acwambold2@verizon.net), call (215) 234-8413.

**June 25, 2022 (Saturday)**  
**WEST LEECHBURG, PENNSYLVANIA**

**Western Reserve Insulator Club's Allegheny Valley Insulator Show & Sale**, will be held Saturday June 25th at the West Leechburg Fireman's Recreation Hall, 1116 Gosser St., West Leechburg PA 15656. Show Hours are 9:00 AM to 3:00 PM with dealer setup starting at 7:30 AM. 8' table \$20. Free Admission Contact: Ron Barth [rktbarth@windstream.net](mailto:rktbarth@windstream.net) (724) 845-8439

**July 29-31, 2022 (Friday-Sunday)**  
**RENO, NEVADA**

**The Federation of Historical Bottle Collectors 2022 National Antique Bottle Convention** will be held at the Grand Sierra Resort hotel and casino located approximately three miles east of downtown Reno. Educational seminars run from 8am-noon on Friday, with Early General Admission to the show floor start at 1pm. General show admission will be \$5 and run from 8am-5pm on Saturday and 9am-2pm on Sunday. For full details, see <https://www.fohbc.org> or contact show chairs Richard & Bev Siri at 707-542-6438 or [rtsiri@sbcglobal.net](mailto:rtsiri@sbcglobal.net).

**July 29-31, 2022 (Friday-Sunday)**  
**GETTYSBURG, PENNSYLVANIA**

**The 2022 NIA National Show and Convention** on July 29th – 31st is in Gettysburg, Pennsylvania. The Wyndham Gettysburg is located two short miles from the Battlefield that changed the course of our Nation's History. For reservations (after 27 July 2021) call 717-339-0020 extension 0 to talk to a hotel representative. Our Group Code is: 072722NAT. All activities for the show occur at the Wyndham. The Chesapeake Bay Insulator Club is the overall sponsor for the NIA National Show, while your show hosts are: Gus Stafford, 816 Flintlock Ridge Road, Mechanicsburg, PA 17055 [Gus.Stafford@gmail.com](mailto:Gus.Stafford@gmail.com); Mary Ann Pike, 1280 Sugar Run Rd, Venetia, PA 15367, [mapike@earthlink.net](mailto:mapike@earthlink.net); Justin & Emily Stoudt, 1531 Helffrich Rd, Kutztown, PA 19530, [justin@theinsulatorstore.com](mailto:justin@theinsulatorstore.com); Steve Gosciminski, 118 Tyson School Road, Catawissa, PA 17820, [rcpandc@yahoo.com](mailto:rcpandc@yahoo.com). For more information, visit [https://www.nia.org/shows/2022\\_national/](https://www.nia.org/shows/2022_national/)



**August 6, 2022 (Saturday)**  
**BERKLEY, MICHIGAN**

**4th Annual Insulator Swap Meet** will be at a bigger and better location. Show hours are 9:00 AM to 3:00 PM, dealer setup starts at 8am. The swap meet location is at the Knights of Columbus 2299 Twelve Mile Rd Berkley Michigan 48072. The location is only 1 hr north of the Michigan/Ohio border, walking distance to downtown Berkley and there's a few antique stores in the area. Tables are \$25 each, free admission. Dealers, please RSVP when possible. Contact Curtis Erickson (248) 515-4612 [crerickson1@gmail.com](mailto:crerickson1@gmail.com) for info

**August 12-13, 2022 (Friday-Saturday)**  
**BEND, OREGON**

**The Annual Jefferson State Insulator Club's Quatro Amigos and Dos Amigos Insulator Show & Sale** in Central Oregon will be held August 12-13 starting with dinner Friday evening followed by our traditional bonfire and story-telling time. On Saturday the show will begin early. Tables will be provided. If you would like a table, please let us know beforehand so the correct number can be ordered. There will be a BBQ lunch at 11:35 AM. Side dishes are welcome. Be sure to bring your "Go-Withs" and any other treasures along with your hunting and adventure stories for the Friday evening bonfire. Please RSVP so we know how much food to order. Lodging and camping available at nearby Tumalo State Park or camp on site. Our location is 64420 Research Road, Bend, OR 97703. Info: Jim Sinasek (541) 383-8067 ([oregonjim@q.com](mailto:oregonjim@q.com)). You may also contact Howard Banks at 541-761-9456 ([hbanks@budget.net](mailto:hbanks@budget.net)) or Tim Wood at 541-923-4116 ([cewtim@gmail.com](mailto:cewtim@gmail.com)).

**August 26-27, 2022 (Friday-Saturday)**  
**HELENA, MONTANA**

**The 2022 Big Sky Show** will be held at A-Storage, 3333 Canyon Ferry Road, 3333 Canyon Ferry Rd, East Helena, MT 59635. Show Starts Friday The 26th at 12:00 and runs until 5:00. Show and Tell At Ron and Peggy's Home at 6:00 until 9:00. Saturday Show starts at 8:00 and ends at 3:00. Inside Table rent is \$20.00 outside tables are \$10.00. For outside tables we suggest you bring your own canopy And you will be responsible for your items when show closes on Friday night. For Info and to reserve your spots please contact Ron Yuhas at 406-439-4573 ([gramapig@bresnan.net](mailto:gramapig@bresnan.net)) or Doug Rusher 406-461-7341 ([ddrusher@aol.com](mailto:ddrusher@aol.com))

# UPCOMING EVENTS

SEPTEMBER 2022 – JUNE 2023



September 17, 2022 (Saturday)  
LAWRENCE, KANSAS

**Border States Antique Show & Sale**, Douglas County Fairgrounds, 2120 Harper St. Bldg. 21, Lawrence, KS, 66046 from 9:00 AM to 3:00 PM. Antique insulators, bottles, jars, postcards, telephones, advertising, porcelain signs, lightning rod balls & arrows and other table-top antiques & collectibles. Friday set up with show open to the public on Saturday. 100+ 8' & 6' tables available. Breakfast & lunch available on site. For information contact Darryl Wagner, [darryl@dwagnerkc.com](mailto:darryl@dwagnerkc.com), 816-719-0801, or Mark Law, [kansasbottles@gmail.com](mailto:kansasbottles@gmail.com), (785) 224-4836.

September 24, 2022 (Saturday)  
PORTERVILLE, CALIFORNIA

**The 23rd annual Merzoian Brothers and Dave Brown Tailgater** will be held under Mark Merzoian's cool wedding ranch pole barn located just outside of Porterville, CA. Tables, breakfast snacks, and lunch will be provided. Please join us...bring glass and mud to sell, trade, or just show off. Reunite with friends from near and afar. We like to think of our gathering as a Mini-Rohde (the King of Tailgaters). Start time is 8:00 AM and lasts until the last vehicle leaves. Contact Bob Merzoian ([bobmerzoian@mac.com](mailto:bobmerzoian@mac.com)), Mark Merzoian ([memerzoian@ocsnet.net](mailto:memerzoian@ocsnet.net)), or Dave Brown ([lskychair@msn.com](mailto:lskychair@msn.com)) for further information or to RSVP. See you then!

September 24, 2022 (Saturday)  
RICHFIELD, OHIO

**The Western Reserve Insulator Club's 12th Annual 'Oktoberfest' Insulator Show** will be at the Masonic Hall, 3750 Grant Street, Richfield, OH 44286 (near the southeast corner of Routes 303 & 176), 10:00 AM to 3:00 PM Free Admission. 8-foot Dealer Tables \$20. Dealer Setup 9:00 -10:00 AM, Bratwurst and Root Beer available for lunch. Contact: John Hovanec 216-392-3622, email [jrhovanec@ymail.com](mailto:jrhovanec@ymail.com) for details.

October 1, 2022 (Saturday)  
MAYER, ARIZONA

**The Grand Canyon Summer Meet and Show** will be at 10090 S. Third Street, Mayer, AZ 86333. The show will run from 8am until done. All are welcome and any/all antiques can be sold/purchased or traded. Bring your own table and chair, lunch will be provided. Please RSVP to ensure we have enough food. For more details, contact Jim Harlow at 928 830-7716 or [harlowmcl1@gmail.com](mailto:harlowmcl1@gmail.com)

November 4-6, 2022 (Friday-Sunday)  
SPRINGFIELD, OHIO

**52nd Mid-Ohio Insulator Show**. Clark County Fairgrounds. 4401 South Charleston Pike. Exit 59 off I-70. Springfield, Ohio. Show Hours: Friday Noon - 6 PM Saturday 8 PM - 5 PM Sunday 9 AM - ??? CONTACT: Curt Boster (614) 301-5125 [cboster530@att.net](mailto:cboster530@att.net)

December 4, 2022 (Sunday)  
ENFIELD, CONNECTICUT

**The Yankee Pole Cat Insulator Club's Annual "Beat the Snow" Antique Insulator, Bottle & Collectibles Show** will be Sunday December 4, 2022 at the American Legion Hall - Enfield, Connecticut. 566 Enfield Street (US Route 5) - Exit 49 off I-91 (just minutes South of Mass. Turnpike - I-90 Exit 4) Show Hours: 8:00 AM to 1:00 PM Insulators \* Bottles \* Jars \* Lightning Rod Equipment \* Flasks \* Stoneware \* Telephone & Telegraph Collectibles \* Railroadiana Advertising & Paper Ephemera \* Small Table Top Antiques FREE ADMISSION For Show Information, contact: John Rajpolt at 203-261-1190 or [rajpolt@earthlink.net](mailto:rajpolt@earthlink.net)

June 9-11, 2023 (Friday-Sunday)  
LOGAN, UTAH

**The National Insulator Association's 54th Annual Show and Convention** will be held at the Cache County Fairgrounds in Logan, Utah. The fairgrounds is located at 450 South 500 West, Logan, UT 84321. There will be plenty of dealer space and exhibit space plus a multitude of things to do in the area. Complete show information will be available in 2023 at the Gettysburg National and subsequently online. Show Hosts are: DON & JEANNE BRIEL, (435) 753-5786, [Don.Briel@comcast.net](mailto:Don.Briel@comcast.net) and BRIAN & CATHY WEESE, (801) 201-5187, [brianweese@gmail.com](mailto:brianweese@gmail.com)



THE UPCOMING EVENTS LIST APPEARS COURTESY OF:

- The NIA Companion - <https://companion.nia.org>
- All Insulators - <https://allinsulators.com>

TO SUBMIT AN UPCOMING INSULATOR SHOW:

- <https://companion.nia.org/shows/>
- [https://allinsulators.com/hobby/shows/submit\\_show/](https://allinsulators.com/hobby/shows/submit_show/)

Established 1848

TRADE MARK  
**HEMINGRAY**  
REGISTERED.



No. 60 Cable 6600 Volts.

Hemingray insulators owe their superiority to good design and material subjected to proper processes of manufacturing, and perfect annealing.

Specify Hemingray and you'll make no mistake.

*Want our Catalog?*

**HEMINGRAY GLASS CO.**  
COVINGTON, KY.

53rd Annual NIA National Show

# GETTYSBURG

At the Wyndham Gettysburg  
95 Presidential Circle, Gettysburg, PA  
July 29th – 31st 2022



[www.nia.org/shows/2022\\_national](http://www.nia.org/shows/2022_national)

# Glass Insulator Collector

# Dan Gauron

"Top prices paid for scare singles and whole collections"

P.O. Box 1721  
Colorado Springs, CO 80901

719-492-0181  
Alyeskaco@comcast.net

**Buy - Sell - Trade**

**NIA #8176**

# RENO 2022

## FOHBC RENO NATIONAL ANTIQUE BOTTLE CONVENTION

WESTERN REGION

### Thursday, July 28 - Sunday, July 31, 2022

Antique Bottle Show & Sales, Bottle Competition, Early Admission, Seminars, Displays, Awards Banquet, Membership Breakfast, Bowling Competition, Silent Auction, Raffle, Children's Events and more...

\$5 General Admission Saturday and Sunday half day



Go to [FOHBC.org](http://FOHBC.org) for hotel booking information, schedule and dealer contracts. Hotel rooms will go fast!

**Richard & Bev Sirl** (Show Chairs)  
[rsirl@sbcglobal.net](mailto:rsirl@sbcglobal.net)

**John Burton** (Displays)  
[JohnCBurton@msn.com](mailto:JohnCBurton@msn.com)

**DeAnna Jordt** (Show Treasurer)  
[djordt@yahoo.com](mailto:djordt@yahoo.com)



TEAM RENO

**Eric McGuire** (Seminars, Keynote Speaker)  
[etmcguire@comcast.net](mailto:etmcguire@comcast.net)

**Ferdinand Meyer V** (Marketing & Advertising)  
[fmeyer@fmgdesign.com](mailto:fmeyer@fmgdesign.com)

**Gina Pellegrini** (Event Photographer)  
[angelina.pellegrini@gmail.com](mailto:angelina.pellegrini@gmail.com)



Info:  
[FOHBC.org](http://FOHBC.org)





## The Insulator Store



Jim Frustieri & Justin Stoudt  
• Proprietors •

[www.TheInsulatorStore.com](http://www.TheInsulatorStore.com)

[sales@TheInsulatorStore.com](mailto:sales@TheInsulatorStore.com)

**WE OFFER HUNDREDS OF "BUY IT NOW" LISTINGS, FAST AND PROFESSIONAL SHIPPING AND SECURE CREDIT CARD PAYMENTS THROUGH PAYPAL. VISIT OUR WEBSITE FOR MORE INFO!**

*Glass • Porcelain • Foreign • Domestic • LRI's • LRB's • Hardware • Literature*



### WANTED

Embossed LRI's and Colorful Lighting Rod Insulators

Specializing in Otis lighting Rod Insulators

Contact

Terry Drollinger

509-830-2809

[terrymdroll@yahoo.com](mailto:terrymdroll@yahoo.com)





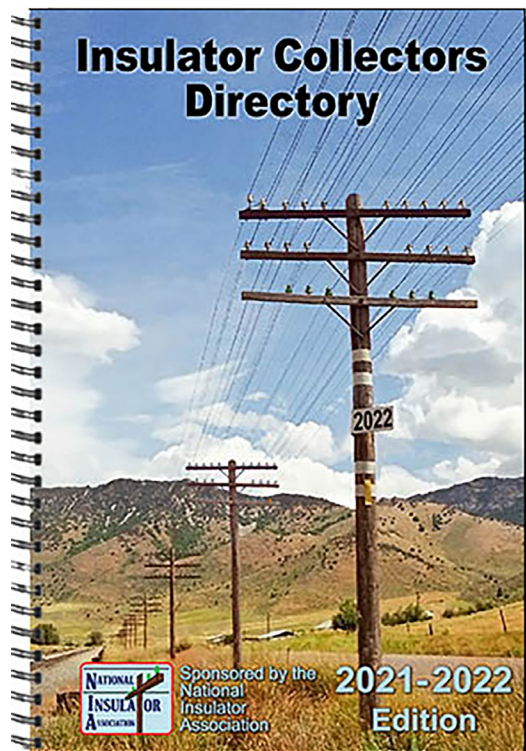
## Eagle Cap Collectibles

Consign now for our next Auction

Howard Banks

[www.EaglecapCollectibles.com](http://www.EaglecapCollectibles.com)

541-761-9456 [hbanks@budget.net](mailto:hbanks@budget.net)



We are excited to release the new 2021-2022 printed Insulator Collectors Directory.

This full-color handy reference can help you find other collectors in a specific area, find a mentor, find other collectors with specific interests, etc. Both online and printed versions are available.

We have shipped all of the pre-orders, but a limited number of extra copies were printed and are now available for \$15 postage paid to NIA members. Don't delay — these are sure to go quickly.

You can order yours online at:

<https://insulatorcollectors.org/purchase>

or through NIA Products (order form is included in this magazine).





## National Insulator Association Scholarship Fund

**Attention young insulator collectors-  
this scholarship is for you!**

Money for college \$1000/\$500 up to \$2000

Write a 300 word essay telling us how to spread the word about the hobby.

Go to <http://www.nia.org/scholarship>



Submission deadline is March 1

The Scholarship Application and Application Guide is available at:

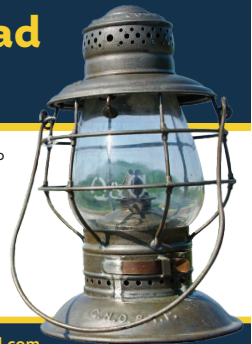
<http://www.nia.org/scholarship/>



## Collect Railroad Antiques?

Since 1971, the Railroadiana Collectors Association Inc. has strived to educate and preserve the history of dining car china/silver, lanterns, porcelain signs, railroad art, timetables, locks and keys, builders plates, and all railroad related memorabilia. Join for \$42.00 per year (\$120 for 3 yrs.) to receive our full-color quarterly publication and connect with railroad antique collectors around the world. Email us for a free electronic copy of our current edition.

[www.railroadcollectors.org/membership](http://www.railroadcollectors.org/membership) | [joinRCAI@gmail.com](mailto:joinRCAI@gmail.com)



# Hemingray Glass Co.

INSULATOR SPECIALIST • NIA #5185



**CHRISTIAN E. WILLIS**

[mr.hemingray@gmail.com](mailto:mr.hemingray@gmail.com)

[www.hemingray.info](http://www.hemingray.info)

(949) 338-1404



# ALL INSULATORS

## Crown Jewels of the Wire

The official magazine for Insulator collectors since 1969

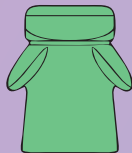


For more than 50 years Crown Jewels of the Wire has been the leading publication for glass and porcelain insulator hobby news, history, articles with columns devoted to worldwide insulators, show reports, in-depth research articles, meeting announcements, photos and other insulator information. There is something for everyone who enjoys insulators!

Being a quarterly publication allows the contributors to create some amazingly rich, well-researched articles. It is like getting a new book on insulators four times a year.

Some of the topics regularly covered are:

- Threadless insulators
- Porcelain insulators
- Insulators from around the world
- North American glass insulators
- Lightning rod insulators
- Research on historic lines
- Hunts and finds
- Upcoming insulator show information

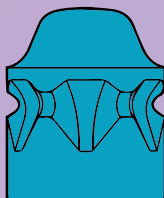


### NIA members discount!

All NIA Members get a \$3 discount when subscribing or renewing. If paying by mail, just include the coupon you received with your NIA membership and make check out for \$3 less. If renewing/subscribing online, email [shaun@allinsulators.com](mailto:shaun@allinsulators.com) for directions.

### Subscription options

Print (USA) .....	\$45
Print (Canada) .....	\$60
Electronic .....	\$30
Print & Electronic (USA) .....	\$60
Print & Electronic (Canada) .....	\$75



### Subscribe online

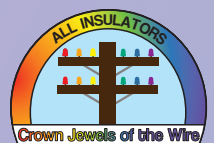
You can subscribe online by credit card or PayPal at: <https://allinsulators.com/magazine/>

### Subscribe by mail

Make checks payable to:  
Hemingray Glass Company

Send to:

Hemingray Glass Co  
P.O. Box 210145  
Auburn Hills, MI 48321



# DRIP POINTS Advertising Information

Help support the NIA's Drip Points by advertising. New rates below include discounts for multiple runs. We now offer classified rates also.

# of Issues	Covers*	Full Page (8" x 10")	1/2 Page (8" x 4.5" or 4.5" x 10")	1/4 Page (4.5" x 3.9" or 8" x 2.1")	1/8 Page (3.9" x 2.1" or 2.2" x 4.5")	1/16 Page (2.2" x 1.8")
1 Issue	\$135	\$90	\$50	\$30	\$18	\$12
2 Issues	\$257	\$171	\$95	\$57	\$34	\$23
3 Issues	\$379	\$252	\$140	\$84	\$50	\$34
4 Issues	\$497	\$331	\$184	\$110	\$66	\$44
5 Issues	\$614	\$410	\$228	\$137	\$82	\$55
6 Issues	\$729	\$486	\$270	\$162	\$97	\$65

\* Back Cover (8.5"x8.5") Inside Back Cover & Inside Front Cover (8.5"x11")

**Classified Ads:**  
10 cents per word, **15 cents per bold word**, \$2.50 min./per Issue

Size: \_\_\_\_\_ #Issues: \_\_\_\_\_ Cost per Issue: \_\_\_\_\_ Total cost: \_\_\_\_\_

Size: \_\_\_\_\_ #Issues: \_\_\_\_\_ Cost per Issue: \_\_\_\_\_ Total cost: \_\_\_\_\_

Size: \_\_\_\_\_ #Issues: \_\_\_\_\_ Cost per Issue: \_\_\_\_\_ Total cost: \_\_\_\_\_

Please supply camera ready artwork; preferred file formats include: PDF, TIF, JPG, DOC, DOCX.

Ads can be designed for an additional fee (please contact Doug Rusher at [admanager@nia.org](mailto:admanager@nia.org)).

To receive the multi-issue discount, ads must run in consecutive issues with no changes.

Ads must be pre-paid. We accept PayPal ([treasurer@nia.org](mailto:treasurer@nia.org)) or checks payable to the NIA.

Ads must meet all postal regulations that govern publications mailed at Non-Profit Standard Mail postage rate.

Name: \_\_\_\_\_

Address: \_\_\_\_\_

City, St, zip: \_\_\_\_\_

Phone: \_\_\_\_\_

Email: \_\_\_\_\_

To place an ad, send form with payment to:

Doug Rusher

3370 Chance Ct.

Helena, MT 59602 [admanager@nia.org](mailto:admanager@nia.org)

## DRIP POINTS Publishing Schedule

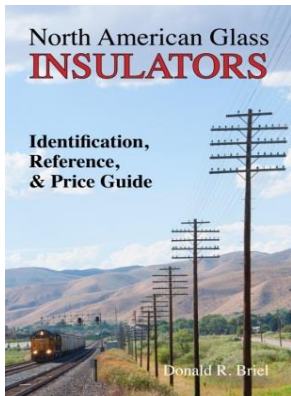
Issue	#	Deadline	Mailing
February	1	Jan. 10	Feb. 1
April	2	Mar. 10	Apr. 1
June	3	May 10	Jun. 1
August	4	Jul. 10	Aug. 1
October	5	Sep. 10	Oct. 1
December	6	Nov. 10	Dec. 1



## CURRENT (2019) EDITION

### North American Glass Insulators – Identification, Reference, & Price Guide

- New CDs & CD Changes
- New Index Listings
- Added Color Listings
- Unverified Questionable Listings Removed
- New and Updated Appendices
- Updated Prices
- 14,500+ listings
- 388 pages – 6” x 9”
- Spiral Bound



Paper Edition -- \$49 ppd\* in U.S.

Paper Edition w/Price Guide Browser -- \$79 ppd\* in U.S.

**\* For delivery outside of the U.S. please contact Don Briel for current shipping cost and payment instructions**

Access Price Guide information on your phone or computer  
Visit: [www.PriceGuideBrowser.com](http://www.PriceGuideBrowser.com) for a demonstration of the Price Guide Browser produced by Bill Meier

To order, visit: [www.InsulatorPriceGuide.com](http://www.InsulatorPriceGuide.com) or mail a check or money order to:

**Donald R. Briel**

P. O. Box 188 • Providence, Utah 84332

Contact: [Don.Briel@comcast.net](mailto:Don.Briel@comcast.net) or (435) 753-5786



**WANTED**

**CD 293's in All Colors**  
**Especially Greens, Sages, Grays, SCA**  
**and Character pieces**

**Also photos of 293's in use,**  
**Historical info etc.**

**Doug Rusher NIA1773**  
**Helena, Mt 59602**

**PH 406-461-7341 or [ddrusher@aol.com](mailto:ddrusher@aol.com)**

**WANTED:** Insulator collections big and small! Midwest collector will travel far and wide to make offers and give appraisals. I will pay TOP DOLLAR for yours! Please contact Andy Wadysz, 734-735-8376, [awadysz@hotmail.com](mailto:awadysz@hotmail.com)



**WANTED CD206**  
**“CASTLE”**  
**in GREEN in Mint**  
**Condition**

**Spencer Garten**  
**7087 Saddle Creek Lane**  
**Sarasota FL 34241**

**PH 859-351-2617 (Call or Text)**  
**[Spencer.Garten@gmail.com](mailto:Spencer.Garten@gmail.com)**



**FREE NIA MEMBER**  
**CLASSIFIEDS**

**LARRY N. NELSON:** FOR SALE: CD 788 Blackglass insulator with a restored skirt. If interested please call 802-244-5555 ask for Larry N. Nelson

**ZAC MIRECKI:** Collector seeks better: Tolls, Hi Tops, Foreign, GPCo, Hartford Faience, medicine bottles, and stamps. Email for want list. Zac Mirecki (860) 916-9014 [zacharymirecki@protonmail.com](mailto:zacharymirecki@protonmail.com)

SEND IN YOUR FREE 25-WORD AD TO [DRIPPOINTS@NIA.ORG](mailto:DRIPPOINTS@NIA.ORG).



# DONATE TO THE NIA

A REQUEST FROM THE NIA DEVELOPMENT COMMITTEE

Dear Fellow Collector,

The NIA is a 501(c)3 nonprofit organization and as such, gifts may be tax deductible. Gifts of support will help the Association improve existing benefits and services as well as create new benefits and services for members and those collectors who are yet to become members. Your gift will allow the NIA to continue its mission to encourage growth and public awareness of the insulator hobby through collecting, dealing and educational endeavors. The NIA has identified four areas where donations will help create and enhance programs directed to that mission:

**SCHOLARSHIP FUND:** Currently the NIA can grant up to two scholarships totaling \$2,000.00 each year. Additional funding would give additional funds for future years; scholarship grants could be increased; or additional scholarships could be granted each year.

**EDUCATIONAL RESOURCE DEVELOPMENT:** There are projects that have been suggested but haven't been implemented for lack of funding such as the production of classroom video presentations, NIA traveling displays for use by learning facilities such as libraries, schools, museums and a Speakers Bureau. These are just a few of the new ideas for greater community awareness of our hobby.

**NATIONAL & REGIONAL SHOW SUPPORT:** The NIA has assumed a financial supportive role intended to assist National Show Hosts/Organizers in reducing their financial risk. With your donations the NIA could possibly increase advertising and promotional reimbursements, possibly provide all awards at National/Regional Shows and possibly provide financial assistance for Regional Shows.

**INTERNET TECHNOLOGY:** The desire for instant communication and information retrieval is with us and cannot be denied. For the association and the hobby to continue to grow it must have a strong presence on the Internet and social media. Donations in this area can help redesign the NIA web site, create videos for posting on social media, develop and present "live" shows including interviews, auctions and sales.

Amount of Donation		Donation Level	Donation Area (circle one)
\$ 0.00 -	\$ 49.99	Aqua	Scholarship Fund
\$ 50.00 -	\$ 99.99	Green	
\$ 100.00 -	\$ 249.99	Emerald	Educational Development
\$ 250.00 -	\$ 499.99	Carnival	
\$ 500.00 -	\$ 999.99	Amber	National & Regional Shows
\$ 1,000.00 -	\$ 2,499.99	Peacock	
\$ 2,500.00 -	\$ 4,999.99	Purple	Internet Technology
\$ 5,000.00 -	\$ 9,999.99	Cobalt	
\$ 10,000.00+		Hobby Benefactor	General Fund

Other Donation area: \_\_\_\_\_ Amount \$ \_\_\_\_\_

**Amount Enclosed:** \_\_\_\_\_ **Signature:** \_\_\_\_\_ **Date:** \_\_\_\_\_

Additional Information: \_\_\_\_\_ **If it is OK to list you as a donor, check here:**

Name: \_\_\_\_\_ Date: \_\_\_\_\_

Address: \_\_\_\_\_ Phone: \_\_\_\_\_

City: \_\_\_\_\_ State: \_\_\_\_\_ Zip: \_\_\_\_\_

Email Address: \_\_\_\_\_

All donors will be listed on the NIA website and any donors of \$50.00 or more will be listed in Drip Points.

Please mail form and payment (payable to NIA) to: NIA Treasurer, Bill Rohde, P.O. Box 28, Colusa, CA 95932

For additional information regarding gifts to the National Insulator Association, Inc., please contact the NIA Development Committee, E-mail address: [donations@nia.org](mailto:donations@nia.org). Your gift is deductible, to the fullest extent of the law. The National Insulator Association ([www.nia.org](http://www.nia.org)) is a 501(c)(3) non-profit organization.

*Thank you for your support of the NIA!*

THANK YOU FOR YOUR SUPPORT!

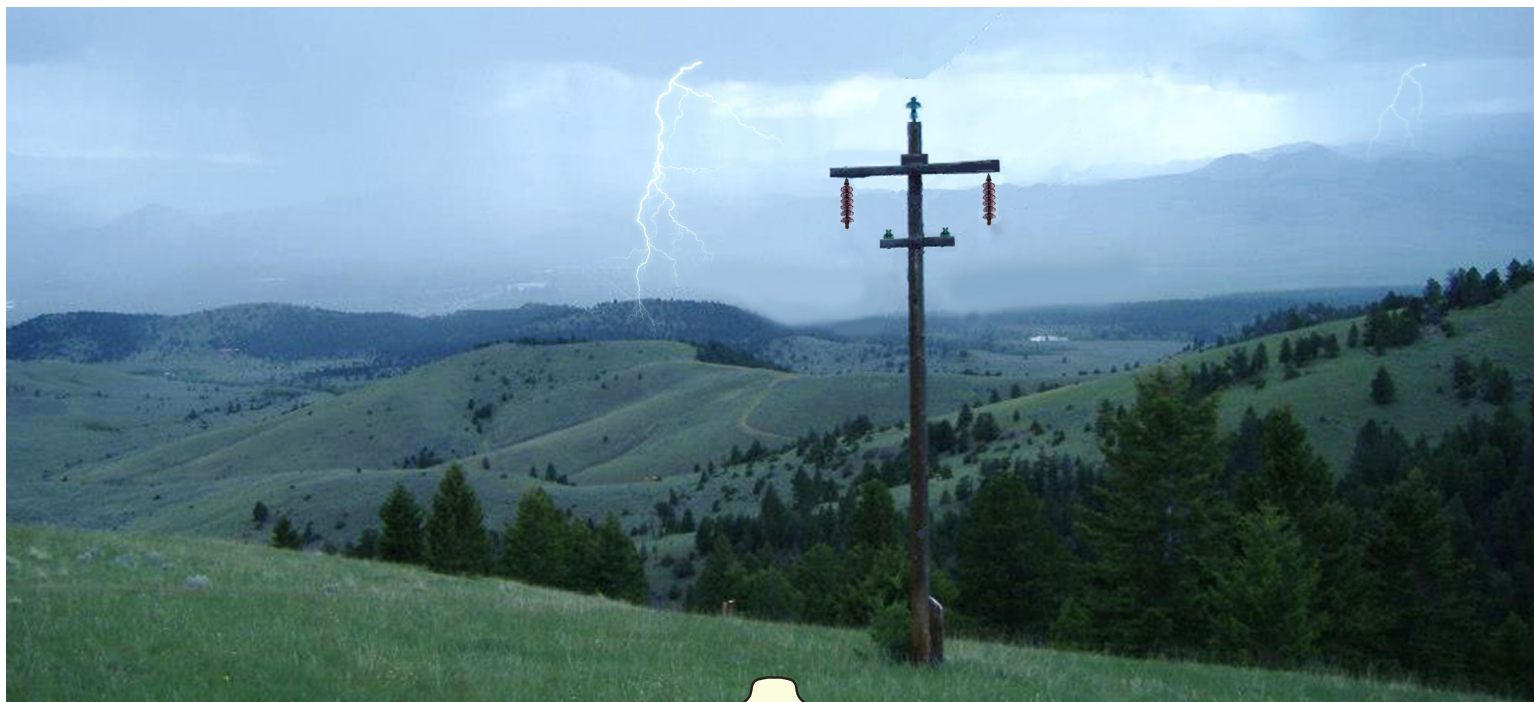
## 2022 NIA Donors & Sponsors

The NIA would like to acknowledge this year's Donors & Sponsors

Name	From	Level	Additional Information	
Tommy	Bolack	New Mexico	Hobby Benefactor	Drip Points
Robert	Tucker	Missouri	Amber	Scholarship
George	Snow	Utah	Carnival	General Fund
Dan	Gauron	Colorado	Carnival	General Fund
Howard	Huckle	New York	Emerald	General Fund
Bill	Sagatis	New York	Emerald	General Fund
Anonymous		Kansas	Emerald	General Fund
Anonymous		Maryland	Emerald	General Fund
Anonymous		Louisiana	Green	General Fund
Anonymous		Florida	Green	General Fund

## Thank you for your support!

The list above is compiled from multiple sources and may not be complete. If you have donated this year, but don't see your name (unless you wanted to be anonymous), please contact the development committee chairman.





# NIA AFFILIATED CLUBS

THE FOLLOWING INSULATOR CLUBS ARE MEMBERS OF THE NIA



**Central Florida Insulator Club**  
Jacque Linscott Barnes  
3557 Nicklaus Drive  
Titusville, FL 32780-5356  
321-480-1800  
[bluebellwt@aol.com](mailto:bluebellwt@aol.com)



**Chesapeake Bay Insulator Club**  
Larry Novak  
12604 Eldrid Court  
Silver Spring, MD 20904  
301-680-8910  
[cbic@clubs.insulators.info](mailto:cbic@clubs.insulators.info)



**Dixie Jewels Insulator Club**  
Bill Haley  
215 McFarland Ave.  
Chattanooga, TN 37405  
423-756-4106  
[djic@clubs.insulators.info](mailto:djic@clubs.insulators.info)



**Greater Chicago Insulator Club**  
Bob Stahr  
360 S. Kenilworth Ave.  
Glen Ellyn, IL 60137  
630-793-5345  
[gcic@clubs.insulators.info](mailto:gcic@clubs.insulators.info)



**Golden State Insulator Club**  
Bob McLaughlin  
2327 E. Goshen Ave.  
Fresno, CA 93720  
559-790-0194  
[rdmclau@comcast.net](mailto:rdmclau@comcast.net)



**Huron Valley Bottle & Insulator Club**  
Rod Krupka  
2641 Echo Lane  
Ortonville, MI 48462  
248-627-6351  
[rod.krupka@yahoo.com](mailto:rod.krupka@yahoo.com)



**Insulator Collectors On the Net**  
Bill Meier  
103 Canterbury Court  
Carlisle, MA 01741-1860  
978-369-0208  
[icon@clubs.insulators.info](mailto:icon@clubs.insulators.info)



**Lone Star Insulator Club**  
Chris Renaudo  
15707 Brookforest Dr.  
Houston, TX 77059  
[lsic@clubs.insulators.info](mailto:lsic@clubs.insulators.info)



**Missouri Valley Insulator Club**  
Darryl Wagner  
14615 NW Skyview Ave  
Smithville, MO 64089  
816-719-0801  
[mvic@clubs.insulators.info](mailto:mvic@clubs.insulators.info)



**North Western Insulator Club**  
Colin Yennie  
504 White Birch CT NW  
Oronoco, MN 55960 2030  
507-289-1095  
[nwic@clubs.insulators.info](mailto:nwic@clubs.insulators.info)



**Triple Ridge Insulator Club**  
Dan Gauron  
P.O. Box 1721  
Colorado Springs, CO 80901  
719-266-0181  
[danielgauron@yahoo.com](mailto:danielgauron@yahoo.com)



**Western Reserve Insulator Club**  
John Hovanec  
13009 Ridge Road  
North Royalton, OH 44133  
440-237-2242  
[wric@clubs.insulators.info](mailto:wric@clubs.insulators.info)



**Yankee Pole Cat Insulator Club**  
John Rajpolt  
17 Pheasant Lane  
Monroe, CT 06468  
203-261-1190  
[ypcic@clubs.insulators.info](mailto:ypcic@clubs.insulators.info)

Do you represent a local insulator club or other related organization? Become an NIA Affiliated Club today! See next page to apply for or renew your membership.



# NIA MEMBERSHIP & RENEWAL FORM

Prospective members may join the NIA at any time; however, the "membership year" begins on January 1<sup>st</sup> and ends on December 31<sup>st</sup>. New memberships issued within three months of the beginning of the new membership year (October – December) will be good for the following calendar year. New members are entitled to all membership privileges immediately upon acceptance by the NIA. **If you are joining the NIA during the months of January through September, your membership will expire on December 31<sup>st</sup> of this Calendar year.**

Submit payment (**Payable to the "NIA" in U.S. funds**) to:

**Andrew Gibson**

5997 Springwater Rd.  
Dansville, NY 14437-9772  
[membership@nia.org](mailto:membership@nia.org)

**Check class of membership:**

- \_\_\_\_\_ Single/Family Membership w/Electronic Drip Points..... **\$30.00**
- \_\_\_\_\_ Single/Family Membership w/Printed Drip Points..... **\$40.00**
- \_\_\_\_\_ Single/Family Membership w/both Electronic & Printed DP... **\$45.00**
- \_\_\_\_\_ Junior Membership (under 18) w/Electronic or Printed DP..... **\$ 5.00**
- \_\_\_\_\_ Club or Organization..... **\$50.00**

**Check years of Payment:**

- Single year \_\_\_\_\_
- Multi-year \_\_\_\_\_

Please Print Legibly

Name \_\_\_\_\_  
 NIA # (if renewal) \_\_\_\_\_  
 Address \_\_\_\_\_  
 City \_\_\_\_\_  
 State/Province \_\_\_\_\_  
 Zip/Postal Code \_\_\_\_\_ (+4) \_\_\_\_\_  
 Country (if not U.S.) \_\_\_\_\_  
 Telephone Number \_\_\_\_\_  
 E-Mail Address \_\_\_\_\_

**Additional Family Members residing in the same household at no additional cost.**  
 (e.g.: spouse, minor children or dependents)

Name	NIA # (if renewal)
1 _____	_____
2 _____	_____
3 _____	_____
4 _____	_____
5 _____	_____

(An e-mail address is required for electronic version of Drip Points)

Include me in NIA Hobby Directory: On-Line Yes  No  Printed Yes  No

Include my USPS Address in: On-Line Yes  No  Printed Yes  No

Include my Email Address in: On-Line Yes  No  Printed Yes  No

Include my Telephone Number in: On-Line Yes  No  Printed Yes  No

You may pre-purchase the next printed Hobby Directory for \$10.00 ..... Yes

**Fees to be submitted**

Membership Amount: \_\_\_\_\_

Directory Amount.....: \_\_\_\_\_

Donation Amount.....: \_\_\_\_\_

**If it is OK to list you as a donor, check here:**

Signed \_\_\_\_\_ Date \_\_\_\_\_ Total Enclosed \$ \_\_\_\_\_  
 Make Checks Payable to the NIA

## NIA MEMBERSHIP BENEFITS

Revised January 23, 2022

- Connect to a worldwide network of over 1000 insulator collectors sharing information, history and the latest news on insulator collecting.
  - Receive electronic notification of upcoming events and current activity in your region of the country through the bi-monthly electronic distribution of the Drip Points Magazine (Also available in printed form).
  - Receive members only access to an enormous digital library of insulator catalogs, patents and insulator manufacturer history.
  - Find and meet other NIA members in your area for mentorship, visit & share collections and swap stories in person or on the NIA Facebook page.
  - Receive guaranteed early exclusive access to NIA National Shows to display, buy and sell insulators.
  - Compete for National Awards and Recognition for your displays, research and contributions to the hobby.
  - Start your own insulator reference library with the "NIA Resource Page", "Fake and Altered Insulators" and "What is an Insulator?"
  - Advertise your hobby passion through your complimentary NIA Decal, Membership Bars, Membership Card and free ad in Drip Points.
  - Use your membership to run for the National Insulator Association Board of Directors to shape the future of the hobby.
  - Contribute to a National Scholarship Program and financial support for NIA Show Hosts in your local area.
  - Continue membership to sustain these benefits and help raise the next generation of insulator collectors through your knowledge & engagement.
- Note: The NIA Member Handbook is available on the NIA website ( [www.nia.org/membership/index.htm](http://www.nia.org/membership/index.htm) ).  
 Hard copies of the Handbook are available upon request to the NIA Membership Director (membership@nia.org).





# MERCHANDISE

SHOW YOUR SUPPORT WITH CLOTHING, BADGES & MORE



## Embroidered Logo T-Shirts

Hanes Adult T-Shirt, Embroidered logo on front

**Colors:** Smoke, Smoky Graphite, Sky Blue, Electric Blue, Aqua, Dark Cobalt, Lt Brown Amber, Med Amber, Rootbeer Amber, Lt Olive Green, 7 Up Green, Dark Olive Green, Yellow, Golden Amber, Oxblood, Deep Red Amber

**Price:** \$17 (S-XL) \$20 (2X-3X)

Color(s): \_\_\_\_\_ Size: \_\_\_\_\_ Qty: \_\_\_\_\_

Shirt Sizing Chart			
S	32-34	XL	44-46
M	36-38	2X	48-50
L	40-42	3X	52-54

**Special Orders:** If you don't see a size or color that you'd like, contact us for availability and price.



**Gildan Adult T-Shirt** – Small logo on front, large logo on back



## Screen Printed T-Shirts

**Colors:** Smoke, Smoky Graphite, Steel Blue, Peacock Blue, Dark Cobalt, Lt Brown Amber, Med Amber, Olive Amber, Rootbeer Amber, Apple Green, 7-Up Green, Olive Green, Yellow, Golden Amber, Flashed Amber, Oxblood

**Price:** \$17 (S-XL) \$20 (2X-3X)

Color(s): \_\_\_\_\_ Size: \_\_\_\_\_ Qty: \_\_\_\_\_



## Button Down Shirt

Port Authority SanMar Blend, embroidered logo on front

**Colors:** Dark Smoke, Aqua, Cobalt, Lt Brown Amber, Yellow, Flashed Amber

**Price:**  
Short Sleeve: \$32 (S-XL) \$34 (2X)  
Long Sleeve: \$34 (S-XL) \$36 (2X)

Short or Long Sleeve: \_\_\_\_\_

Color(s): \_\_\_\_\_ Size: \_\_\_\_\_ Qty: \_\_\_\_\_



## Hooded Sweatshirt

Gildan Adult Full-Zip Hooded Sweatshirt, embroidered logo on front

**Colors:** Medium Smoke, Cobalt

**Price:** \$32 (S-XL) \$36 (2X)

Color(s): \_\_\_\_\_ Size: \_\_\_\_\_ Qty: \_\_\_\_\_



## Denim Button Down Shirt

Sierra Pacific, Short or Long Sleeve

**Color:** Aqua

**Price:**  
Short Sleeve: \$33 (S-XL) \$36 (2X-3X)  
Long Sleeve: \$36 (S-XL) \$39 (2X-3X)

Short or Long Sleeve: \_\_\_\_\_ Size: \_\_\_\_\_ Qty: \_\_\_\_\_



## Crew Neck Sweatshirt

Gildan Adult Crewneck Sweatshirt, Screen print with small logo on front & large logo on back

**Color:** Smoke  
**Price:** \$29 (S-XL) \$33 (2X)

Size: \_\_\_\_\_ Qty: \_\_\_\_\_





Un-Structured

**Embroidered Caps**

**Colors (Un-Structured):**

Smoke, Dark Smoke, Aqua, Cobalt, Lt Brown Amber, 7 Up Green, Olive Green, Yellow, Gold Amber, Flashed Amber, Pink, Oxblood

**Colors (Structured with Mesh):**

Khaki-Brown, Royal-White, Kelly-White, Red-White, Heather-Gray-Black, Royal, Cardinal, Gray-Charcoal-Black, White-Royal, Khaki-White

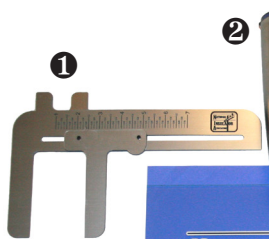


Structured with Mesh

Price: \$15.00 Cap Type: \_\_\_\_\_ Color(s): \_\_\_\_\_ Qty: \_\_\_\_\_

**1 Insulator Caliper**

Measures up to 7"  
Plastic will not scratch insulators  
Long outside & short inside jaws  
Price: \$18 Qty: \_\_\_\_\_



**2 20 oz. Copper-Lined Stainless Steel Tumbler**

Yeti-like Stainless tumbler keeps drinks cold or hot for hours!  
One color imprint (blue)  
**SOLD OUT**



**3 16 oz. Travel Tumbler**

4 color imprint  
Price: \$14 **\$10** Qty: \_\_\_\_\_

*On Sale!*

**4 NIA Collector's Patch**

2 3/4" x 3 3/4" embroidered patch  
Price: \$4 Qty: \_\_\_\_\_

**5 NIA Window Decal (Color)**

For outside car window - 4 1/4 x 5 3/4  
Price: \$7 Qty: \_\_\_\_\_

**6 NIA Window Decal (White)**

For outside car window - 5 1/2 x 6 3/4  
Price: \$10 Qty: \_\_\_\_\_

**7 NIA Challenge Coin**

2019; 50 Years of Meets & Shows; 2 sided  
Price: \$10 Qty: \_\_\_\_\_

**8 NIA Hat/Lapel Pin**

Price: \$7 Qty: \_\_\_\_\_

**9 NIA Name Badge** Engraved; beveled edges; Magnetic back Price: \$18

Name Badge Engraving Information:

Name \_\_\_\_\_ NIA# \_\_\_\_\_ City \_\_\_\_\_ State \_\_\_\_\_  
Name \_\_\_\_\_ NIA# \_\_\_\_\_ City \_\_\_\_\_ State \_\_\_\_\_  
Name \_\_\_\_\_ NIA# \_\_\_\_\_ City \_\_\_\_\_ State \_\_\_\_\_

**10 Badge Bar** NIA or Club position, Club Bars, Show Bars, Awards or Custom Bars Price: \$5

Badge Bar Engraving Information:

Club Bar \_\_\_\_\_ Qty: \_\_\_\_\_ Line 1 \_\_\_\_\_  
Show Bar \_\_\_\_\_ Year \_\_\_\_\_ Line 2 \_\_\_\_\_

**Insulator Collectors Hobby Directory - 2021/2022** Hobby wide directory to locate other collectors in your area or around the world Price: \$15 (shipping included) Qty: \_\_\_\_\_



**Tote Bags**

Sturdy with white screen print NIA logo - Dimensions: 12 1/2" W x 13 1/2" H x 8 1/2" D; 14" handles

Colors: Sapphire, Light Brown Amber, Cobalt, Oxblood, Black

Price: \$8 Color(s): \_\_\_\_\_ Qty: \_\_\_\_\_

**Contiguous U.S. Postage Rates:**

- \$9.50 for the first item of clothing, hat, tumbler, tote or caliper & \$3.50 for each additional item in same group.
- Patches & Badge Bars ..... \$1.00 ea.
- Decals, Name Badges, Hat Pins, Challenge Coins..... \$4.00 ea.
- If patches, badge bars, decals, name badges, hat pins & challenge coins are ordered with clothing, there is no additional postage for these items.
- For postage outside the Contiguous U.S., please contact us for a quote.

Subtotal: \$ \_\_\_\_\_  
U.S. Postage: \$ \_\_\_\_\_  
**Total Enclosed: \$ \_\_\_\_\_**

Please make check or money order payable in U.S. funds to the National Insulator Association.

Name: \_\_\_\_\_  
Address: \_\_\_\_\_  
City: \_\_\_\_\_ State: \_\_\_\_\_ Zip: \_\_\_\_\_  
Phone: \_\_\_\_\_  
Email: \_\_\_\_\_

**Please send detached, completed form and payment to:**  
Margaret Wagner, 14615 Skyview Ave., Smithville, MO 64089  
(816) 719-0802 • [niaproducts@nia.org](mailto:niaproducts@nia.org)

## **NIA Board of Directors**

### ***President***

**Darryl Wagner** – NIA #8671  
14615 NW Skyview Ave.  
Smithville, MO 64089  
[president@nia.org](mailto:president@nia.org)

### ***First Past President***

**Steve Roberts** – NIA #7935  
2404 Mansker Dr.  
Madison, TN 37115  
[1stpastpres@nia.org](mailto:1stpastpres@nia.org)

### ***Western Region VP***

**Roger Ziesak** – NIA #8919  
8865 Grouse Dr.  
Missoula, MT 59808  
[westernvp@nia.org](mailto:westernvp@nia.org)

### ***Central Region VP***

**Chris Hedges** – NIA #15  
621 W. 61st St.  
Kansas City, MO 64113  
[centralvp@nia.org](mailto:centralvp@nia.org)

### ***Eastern Region VP***

**Gus Stafford** – NIA #8871  
816 Flintlock Ridge Rd.  
Mechanicsburg, PA 17055  
[easternvp@nia.org](mailto:easternvp@nia.org)

### ***Secretary***

**Carolyn Berry** – NIA #4336  
1010 Wren Ct.  
Round Rock, TX 78681  
[secretary@nia.org](mailto:secretary@nia.org)

### ***Treasurer***

**Bill Rohde** – NIA #1219  
P.O. Box 28  
Colusa, CA 95932  
[treasurer@nia.org](mailto:treasurer@nia.org)

### ***Membership Director***

**Andrew Gibson** – NIA #2422  
5997 Springwater Rd.  
Dansville, NY 14437-9772  
[membership@nia.org](mailto:membership@nia.org)

### ***Information Director***

**Christian Willis** – NIA #5185  
P.O. Box 2797  
Parker, CO 80134  
[information@nia.org](mailto:information@nia.org)

## **NIA Advisors & Committee Chairs**

### ***Ad Manager***

**Doug Rusher** – NIA #1773  
3370 Chance Ct.  
Helena, MT 59602  
[admanager@nia.org](mailto:admanager@nia.org)

### ***Authentication & Classification Advisor***

**Paul Greaves** – NIA #2685  
8830 Benton Acre Rd.  
Granite Bay, CA 95746  
[authentication@nia.org](mailto:authentication@nia.org)

### ***Awards & Recognition Chair***

**Ken Willick** – NIA #3709  
7349 Seneca Ave.  
Lima, NY 14485  
[awards@nia.org](mailto:awards@nia.org)

### ***Commemorative Coordinator***

**Margaret Wagner** – NIA #8711  
14615 Skyview Ave.  
Smithville, MO 64089  
[commemorative@nia.org](mailto:commemorative@nia.org)

### ***Development Committee Chair***

**Bill Rohde** – NIA #1219  
P.O. Box 28  
Colusa, CA 95932  
[donations@nia.org](mailto:donations@nia.org)

### ***Directory Committee Chair***

**Nathan Holmes** – NIA #4002  
6570 Pawnee Cir.  
Colorado Springs, CO 80920  
[directory@nia.org](mailto:directory@nia.org)

### ***Drip Points Managing Editor***

**Doug Rusher** – NIA #1773  
3370 Chance Ct.  
Helena, MT 59602  
[drippoints@nia.org](mailto:drippoints@nia.org)

### ***Ethics Advisor***

**Daryl Stahler** – NIA #8843  
4622 N. Paseo Pitiquito  
Tucson, AZ 85750  
[ethics@nia.org](mailto:ethics@nia.org)

### ***Events Committee Chair***

**Gene Hawkins** – NIA #421  
3847 N. Prairie St.  
Warsaw, IN 46582  
[show@nia.org](mailto:show@nia.org)

### ***Finance Committee Chair***

**Bill Snell** – NIA #2624  
11427 E. Scarritt Ave.  
Sugar Creek, MO 64054  
[finance@nia.org](mailto:finance@nia.org)

### ***Historian***

**Rick Soller** – NIA #2958  
4086 Blackstone Ave.  
Gurnee, IL 60031  
[historian@nia.org](mailto:historian@nia.org)

### ***Product Manager***

**Margaret Wagner** – NIA #8711  
14615 NW Skyview Ave.  
Smithville, MO 64089  
[niaproducts@nia.org](mailto:niaproducts@nia.org)

### ***Promotions Committee Chair***

**Mike Green** – NIA #3175  
2513 S. Balsam St.  
Lakewood, CO 80227  
[promotions@nia.org](mailto:promotions@nia.org)

### ***Research & Education Advisor***

**Lee Brewer** – NIA #6695  
344 S. Main St.  
Bellefontaine, OH 43311  
[education@nia.org](mailto:education@nia.org)

### ***Rules & Procedures Advisor***

**Don Briel** – NIA #7218  
P.O. Box 188  
Providence, UT 84332  
[procedures@nia.org](mailto:procedures@nia.org)

### ***Scholarship Committee Chair***

**Tammy Brewer** – NIA #6696  
344 S. Main St.  
Bellefontaine, OH 43311  
[scholarship@nia.org](mailto:scholarship@nia.org)

### ***Webmaster, Technology Committee Chair***

**Bob Berry** – NIA #1203  
1010 Wren Ct.  
Round Rock, TX 78681  
[webmaster@nia.org](mailto:webmaster@nia.org)

## **Drip Points Editorial Staff**

**Doug Rusher** – *Managing Editor*

**Christian Willis** – *Assistant Editor*

**Nathan Holmes** – *Assistant Editor*

**Mike Green** – *Assistant Editor*

**International Article Coordinator**

**Mike Doyle** – NIA #5932  
1805 East Country Ct.  
Visalia, CA 93292  
[international@nia.org](mailto:international@nia.org)

**Drip Points Show Report Coordinator**

**Connie Dueker**  
2560 Oak Hills Drive  
Colorado Springs, CO 80919  
[showreports@nia.org](mailto:showreports@nia.org)



# Bill and Jill Insulators

[www.billandjillinsulators.com](http://www.billandjillinsulators.com)

[info@billandjillinsulators.com](mailto:info@billandjillinsulators.com)

Bill and Jill Meier • 103 Canterbury Ct  
Carlisle, MA 01741 • 781-999-3048

**Go with the best!**

***But don't take our word for it...***

**Facebook 5.0** (24 votes)

**Google 5.0** (10 reviews)



**Watch for our upcoming  
auctions!**

***We're always accepting consignments***



National Insulator Association  
 10801 N. 24th Ave. Ste. 103  
 Phoenix, AZ 85029-4712



**DARIO DIMARE**

FREE APPRAISALS

DARIO@DARIODESIGNS.COM

**COLLECTING INSULATORS SINCE 1967!**

WILL BUY ONE PIECE OR AN ENTIRE COLLECTION

318 MAIN STREET, NORTHBOROUGH, MA 01532

**DARIO DIMARE**

CONSIGNMENTS ACCEPTED

617-306-2420