



CD 213

**CD 213**

**HEMINGRAY**

(F-Skirt) HEMINGRAY (R-Skirt) N° 43 RDP  
Aqua

(F-Skirt) HEMINGRAY (R-Skirt) N° 43 SDP  
Aqua

(F-Skirt) HEMINGRAY (R-Skirt) [Vertical  
Bar] N° 43 RDP  
Aqua, Hemingray Blue

(F-Skirt) HEMINGRAY (R-Skirt) [Vertical  
Bar] N° 43 SDP  
Aqua

(F-Skirt) HEMINGRAY/MADE IN U.S.A. (R-  
Skirt) N° 43 RDP  
Aqua, Emerald Green, Hemingray Blue

(F-Skirt) HEMINGRAY/MADE IN U.S.A. (R-  
Skirt) N° 43 SDP  
Aqua, Hemingray Blue



CD 214

**CD 214**

**ARMSTRONG**

(F-Skirt) *Armstrong's* NO 10 (R-Skirt) MADE  
IN U.S.A. ['A' in a circle] [Number and Dots]  
SB  
Clear, Light Straw

**HEMINGRAY**

(F-Skirt) HEMINGRAY-43 (R-Skirt) MADE  
IN U.S.A. RDP  
7-up Green, Blue, Aqua, Dark Green Aqua, Ice  
Blue

(F-Skirt) HEMINGRAY-43 (R-Skirt) MADE  
IN U.S.A./[Numbers and Dots] CB  
Yellow Tint, Clear

(F-Skirt) HEMINGRAY-43 (R-Skirt) MADE  
IN U.S.A./[Numbers and Dots] RDP  
Clear, Straw

(F-Skirt) HEMINGRAY-43/[Numbers and  
Dots] (R-Skirt) MADE IN U.S.A./[Number]  
RDP  
Off Clear

**NACIONALES**

(F-Skirt) NACIONALES (R-Skirt) TELEGRAFOS RDP  
Green Amber, Dark Red Amber, Golden Amber

**WHITALL TATUM**

(F-Skirt) WHITALL TATUM Co. NO 10/[Number] (R-Skirt) MADE IN U.S.A. ['W/T' in a triangle]/[Number] SB  
Smoke, Clear, Light Green, Light Aqua

**LOWEX**

(F-Skirt) LOWEX/REG.U.S.PAT.OFF. (R-Skirt) -MADE IN U.S.A.- [Number] SB  
Light Straw

**WHITALL TATUM**

(F-Skirt) (Arc)WHITALL TATUM/512U (R-Skirt) (Arc)MADE IN U.S.A./[Numbers]/['A' in a circle] SB  
Clear, Smoke, Amber



**CD 216**



**CD 217**

**CD 216**

**ARMSTRONG**

(F-Skirt) *Armstrong's* 51-2U (R-Skirt) MADE IN U.S.A. ['A' in a circle] [Numbers and Dots] SB  
Clear, Root Beer Amber

**HEMINGRAY**

(F-Skirt) HEMINGRAY-661 (R-Skirt) MADE IN U.S.A./ [Numbers] SB  
Flashed Amber, Clear, Red Amber

**CD 217**

**ARMSTRONG**

(F-Skirt) *Armstrong's* 51 C3 (R-Skirt) MADE IN U.S.A. ['A' in a circle] [Numbers and Dots] SB  
Root Beer Amber





CD 218

CD 218

**HEMINGRAY**

(F-Skirt) HEMINGRAY-660 (R-Skirt) MADE IN U.S.A./  
[Numbers and Dots] CB  
Light Green, Ice Green, Clear, Straw, Carnival

CD 219

**HEMINGRAY**

(F-Skirt) HEMINGRAY-66/[Numbers] (R-Skirt) MADE  
IN U.S.A./[Number] SB  
Red Amber, Clear

(F-Skirt) HEMINGRAY-660 (R-Skirt) MADE IN U.S.A./  
[Numbers and Dots] CB  
Clear

(F-Skirt) HEMINGRAY-660 (R-Skirt) MADE IN U.S.A./  
[Numbers and Dots] SB  
Amber, Clear, Ice Blue

(F-Skirt) HEMINGRAY-660/LOWEX (R-Skirt) MADE  
IN U.S.A./[Numbers and Dots] SB  
Clear w/Carnival Top, Ice Green, Olive Amber, Honey  
Amber

(F-Skirt) HEMINGRAY-660/[Numbers and Dots] (R-  
Skirt) MADE IN U.S.A./[Numbers and Dots] SB  
Olive Amber

**NO NAME**

[No Embossing] SB  
Clear



CD 219



CD 220

**CD 220**

**HEMINGRAY**

(F-Skirt) HEMINGRAY-67/[Numbers] (R-Skirt)  
MADE IN U.S.A./[Number] SB  
Light Amber

(F-Skirt) HEMINGRAY-670 (R-Skirt) MADE  
IN U.S.A./[Numbers and Dots] CB  
Ice Aqua, Clear, Off Clear

(F-Skirt) HEMINGRAY-670 (R-Skirt) MADE  
IN U.S.A./[Numbers and Dots] SB  
Clear

(F-Skirt) HEMINGRAY-670/LOWEX (R-Skirt)  
MADE IN U.S.A./[Numbers and Dots] SB  
Ice Green w/Treated Top

(F-Skirt) HEMINGRAY-670/LOWEX/  
REG.U.S.PAT.OFF. (R-Skirt) MADE IN  
U.S.A./[Numbers and Dots] CB  
Ice Blue, Amber

(F-Skirt) HEMINGRAY-670/LOWEX/  
REG.U.S.PAT.OFF. (R-Skirt) MADE IN  
U.S.A./[Numbers and Dots] SB  
Olive Amber

(F-Skirt) HEMINGRAY-670/['LOWEX'  
Blotted out] (R-Skirt) MADE IN U.S.A./  
[Numbers and Dots] CB  
Clear

(F-Skirt) HEMINGRAY-670/['LOWEX'  
Blotted out]/REG. U.S. PAT. OFF (R-  
Skirt)MADE IN U.S.A./[Number and Dots]  
CB  
Blue Tint, Clear w/Carnival Top, Clear, Straw

(F-Skirt) HEMINGRAY-670/[Numbers and  
Dots] (R-Skirt) MADE IN U.S.A./[Number]  
SB  
Clear, Amber

**CD 221**

**HEMINGRAY**

(F-Skirt) HEMINGRAY-68 (R-Skirt) MADE IN U.S.A./  
[Number and Dots] SB  
Amber

(F-Skirt) HEMINGRAY-680 (R-Skirt) MADE IN U.S.A./  
[Numbers and Dots] CB  
Clear, Ice Green, Straw



**CD 221**

(F-Skirt) HEMINGRAY-680/LOWEX (R-Skirt) MADE  
IN U.S.A./[Number] SB  
Ice Green, Ice Green w/Carnival Top, Clear

(F-Skirt) HEMINGRAY-680/LOWEX/  
REG.U.S.PAT.OFF. (R-Skirt) MADE IN U.S.A./  
[Numbers and Dots] SB  
Clear, Clear w/Carnival Top, Ice Green

(F-Skirt) HEMINGRAY\_68/[Numbers and Dots] (R-  
Skirt) MADE IN U.S.A./[Number] SB  
Olive Amber

(F-Skirt) HEMINGRAY\_680/['LOWEX' Blotted out]/  
['REG. U.S. PAT.OFF.' Blotted out] (R-Skirt) MADE IN  
U.S.A./[Numbers and Dots] SB  
Clear

**WHITALL TATUM**

(F-Skirt) WHITALL TATUM CO. NO. 514/[Number]  
(R-Skirt) MADE IN U.S.A. ['W/T' in a triangle] SB  
Dark Red Amber

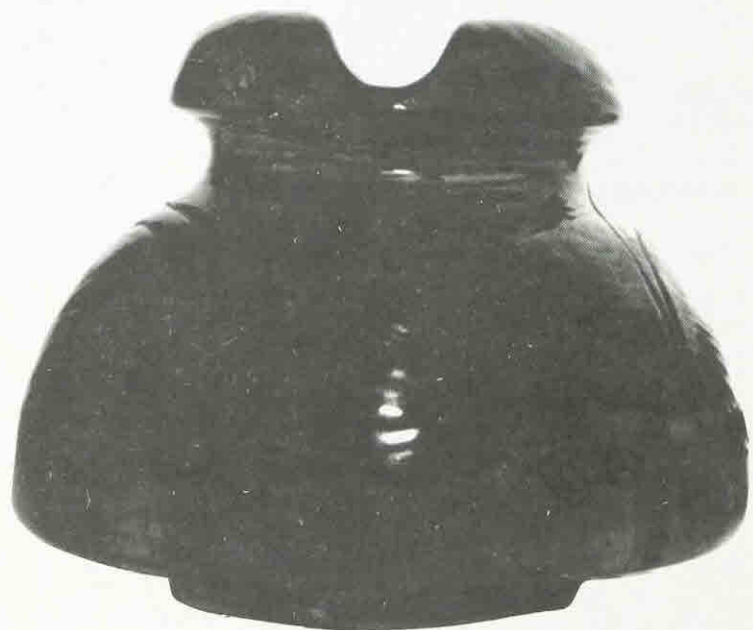




CD 225

**BROOKFIELD**  
(F-Skirt) BROOKFIELD SB  
Dark Aqua

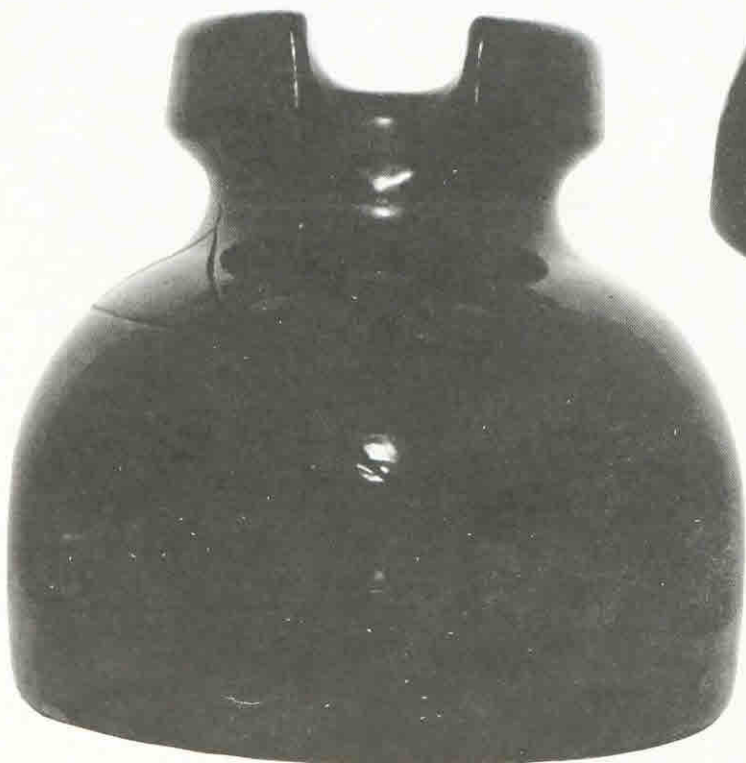
CD 225



CD 226

CD 226

**NO NAME**  
(F-Skirt) NO.115 SB  
Aqua, Green



CD 226.3

CD 226.3

**B**  
(F-Skirt) B SB  
Emerald Green Blackglass

